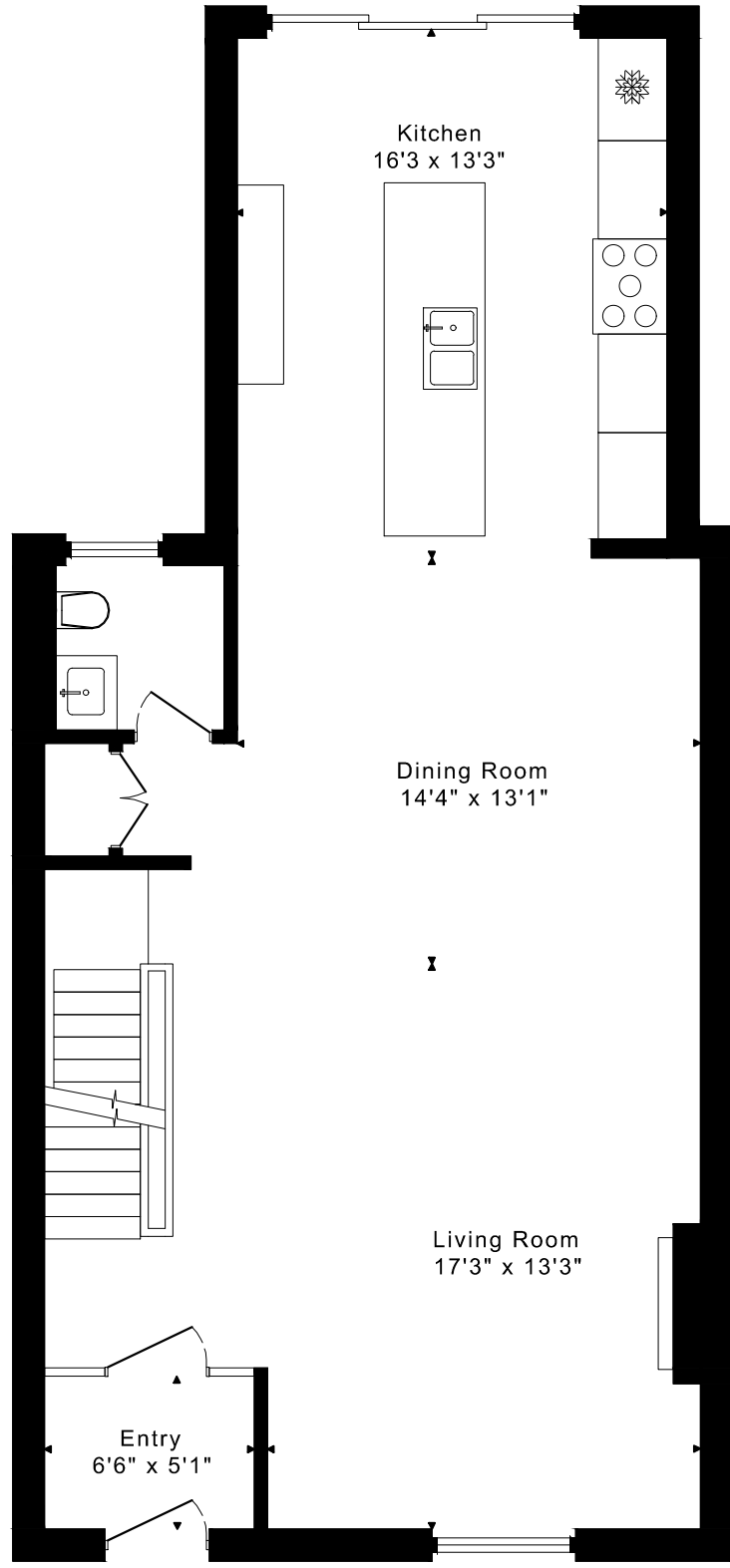
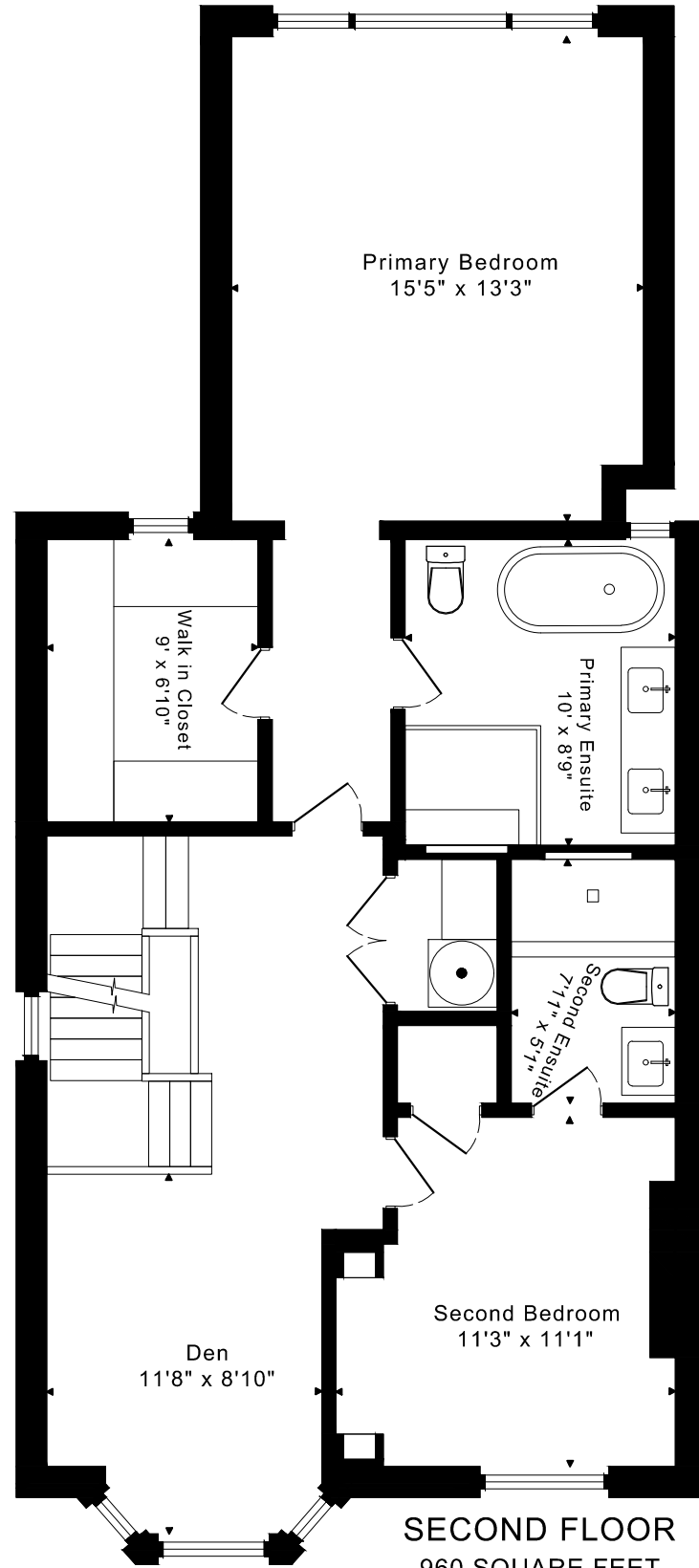


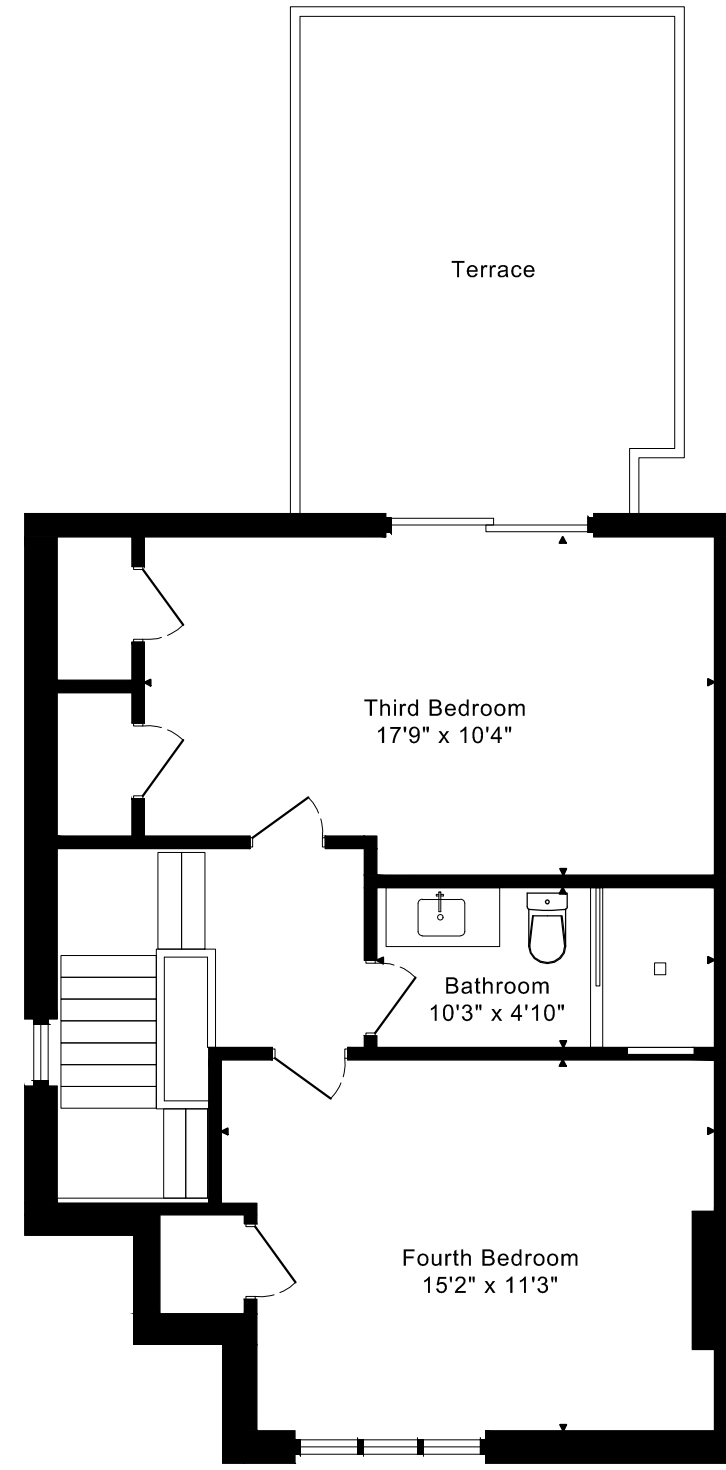
34 TRANBY AVENUE FLOOR PLANS



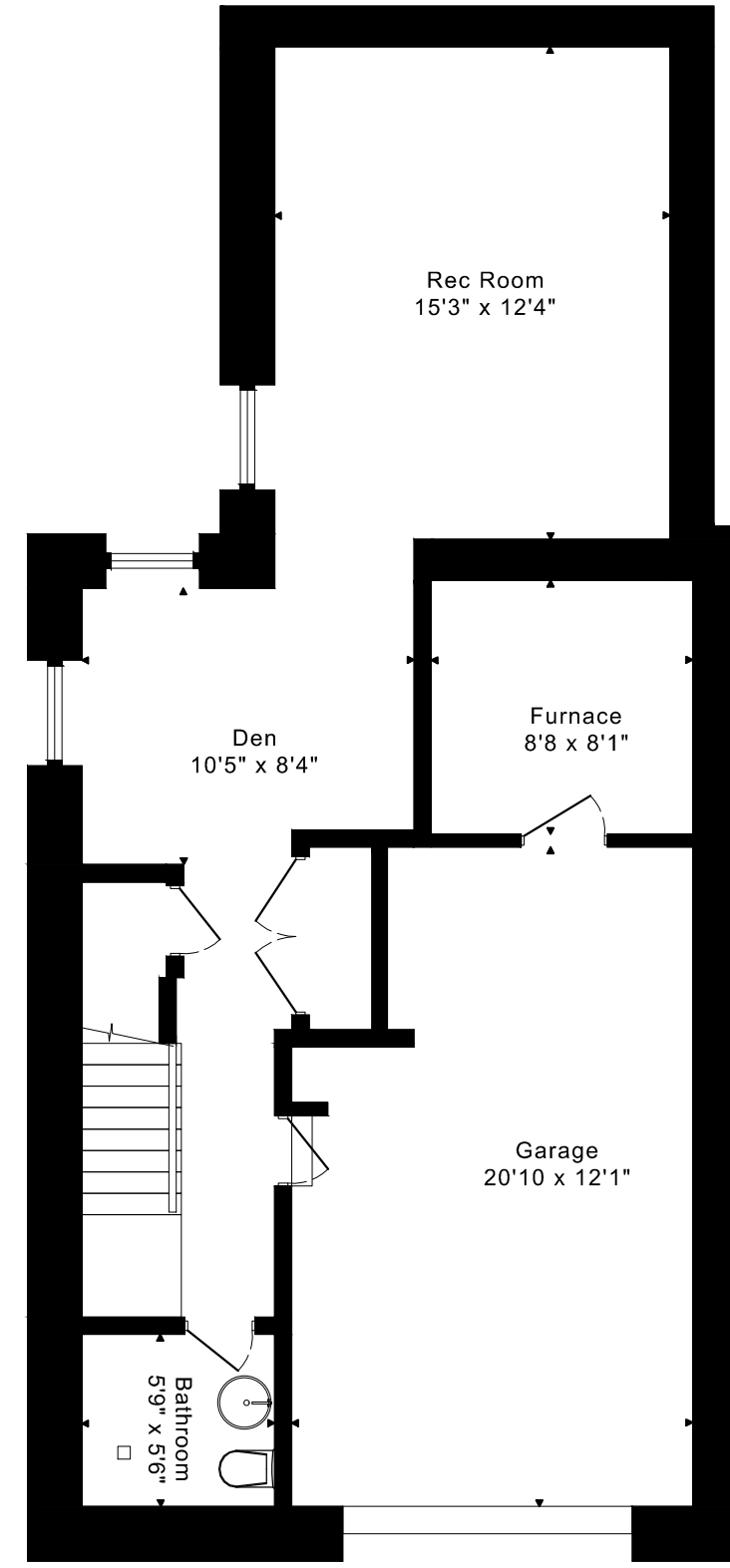
MAIN FLOOR
950 SQUARE FEET



SECOND FLOOR
960 SQUARE FEET



THIRD FLOOR
615 SQUARE FEET

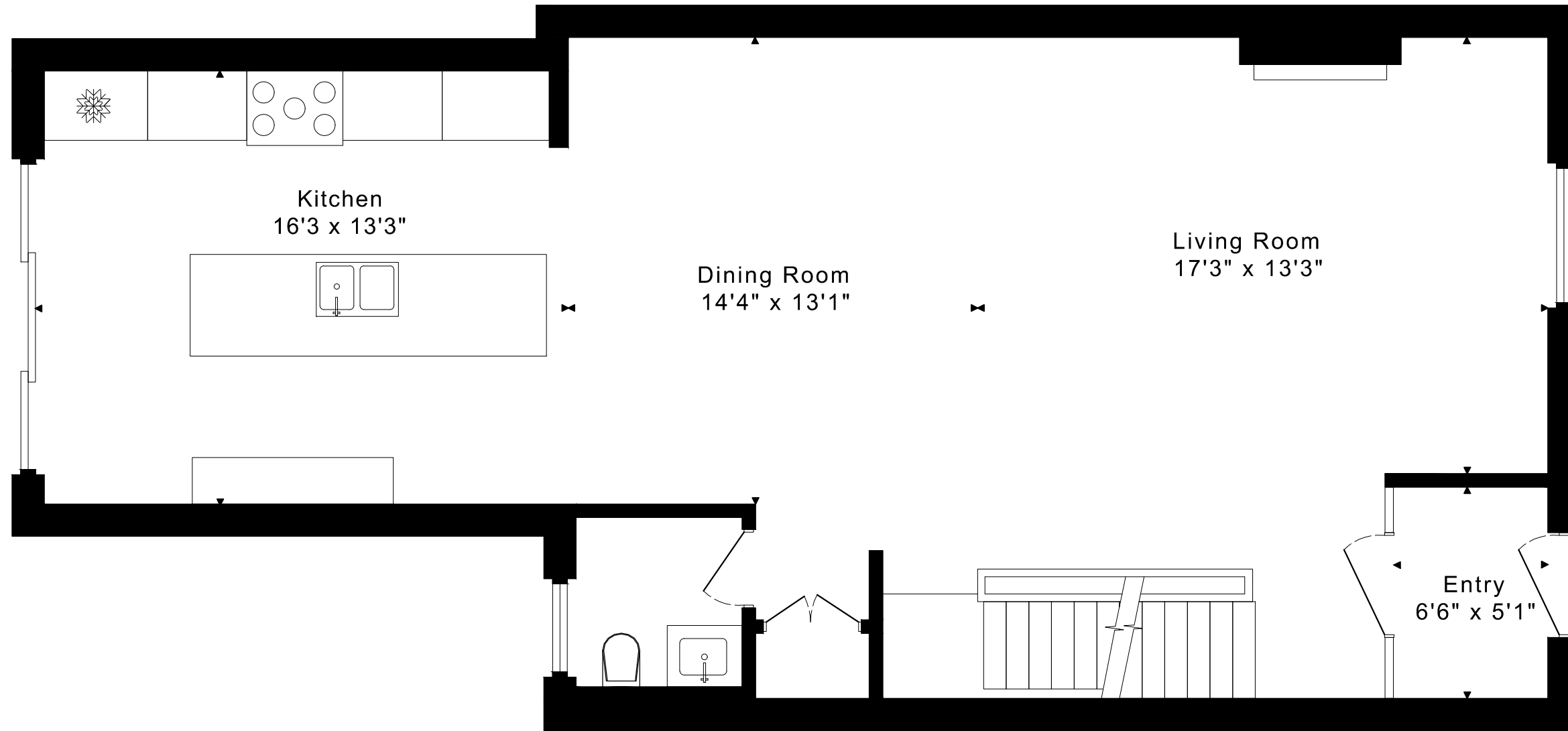


LOWER FLOOR
660 SQUARE FEET

2525 sq ft + 660 sq ft
BELOW GRADE

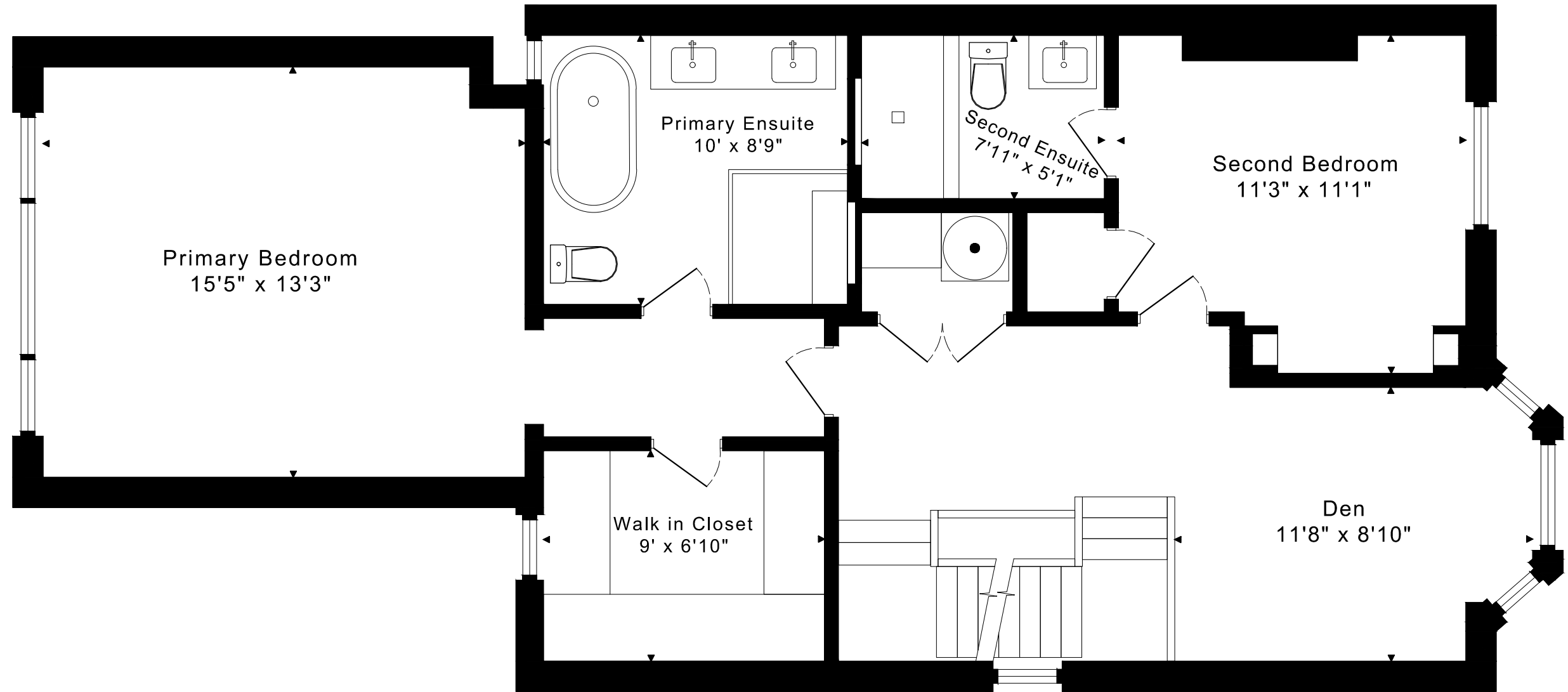
34 TRANBY AVENUE FLOOR PLANS

MAIN FLOOR 950 SQUARE FEET



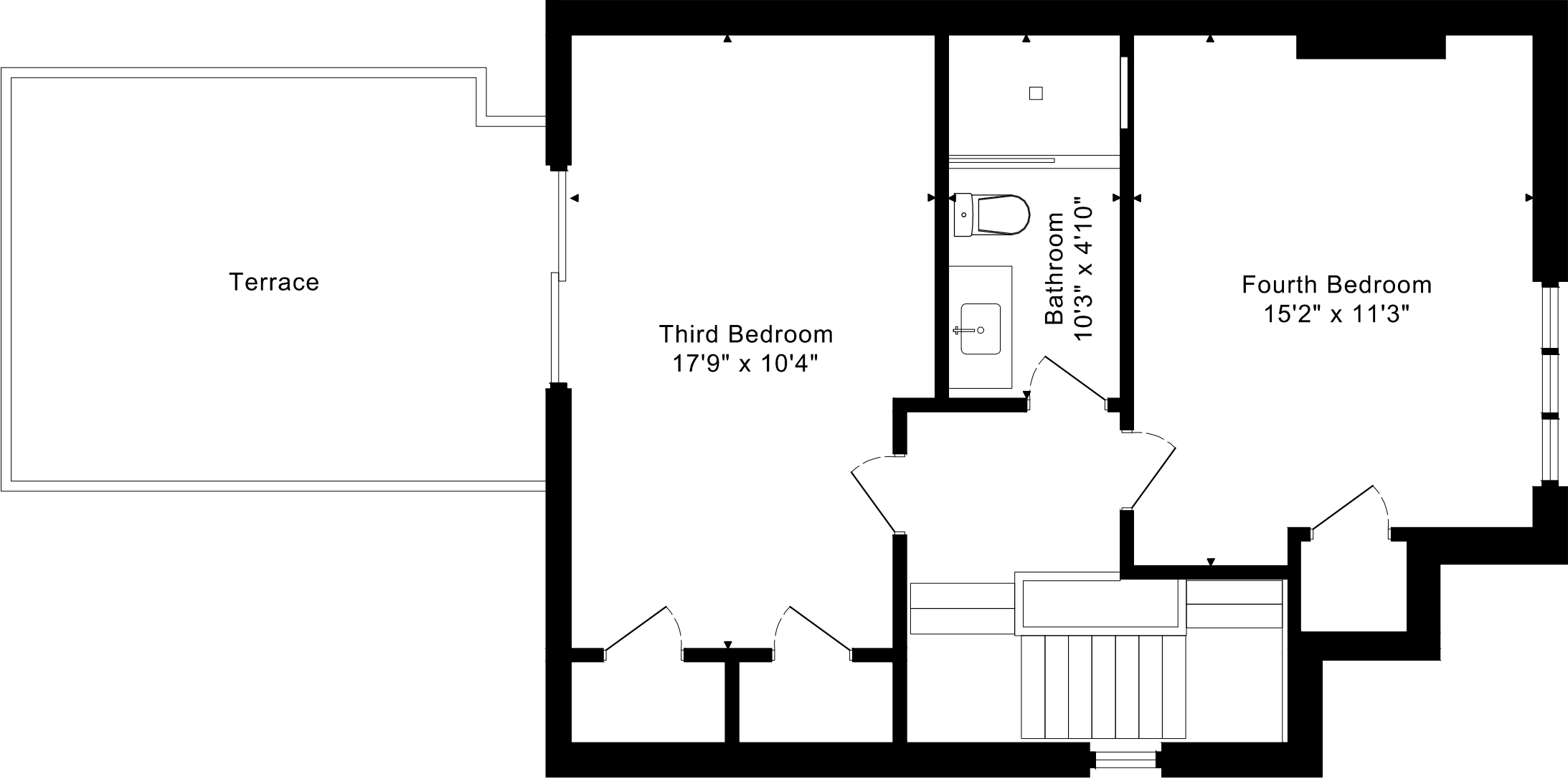
34 TRANBY AVENUE FLOOR PLANS

SECOND FLOOR 960 SQUARE FEET



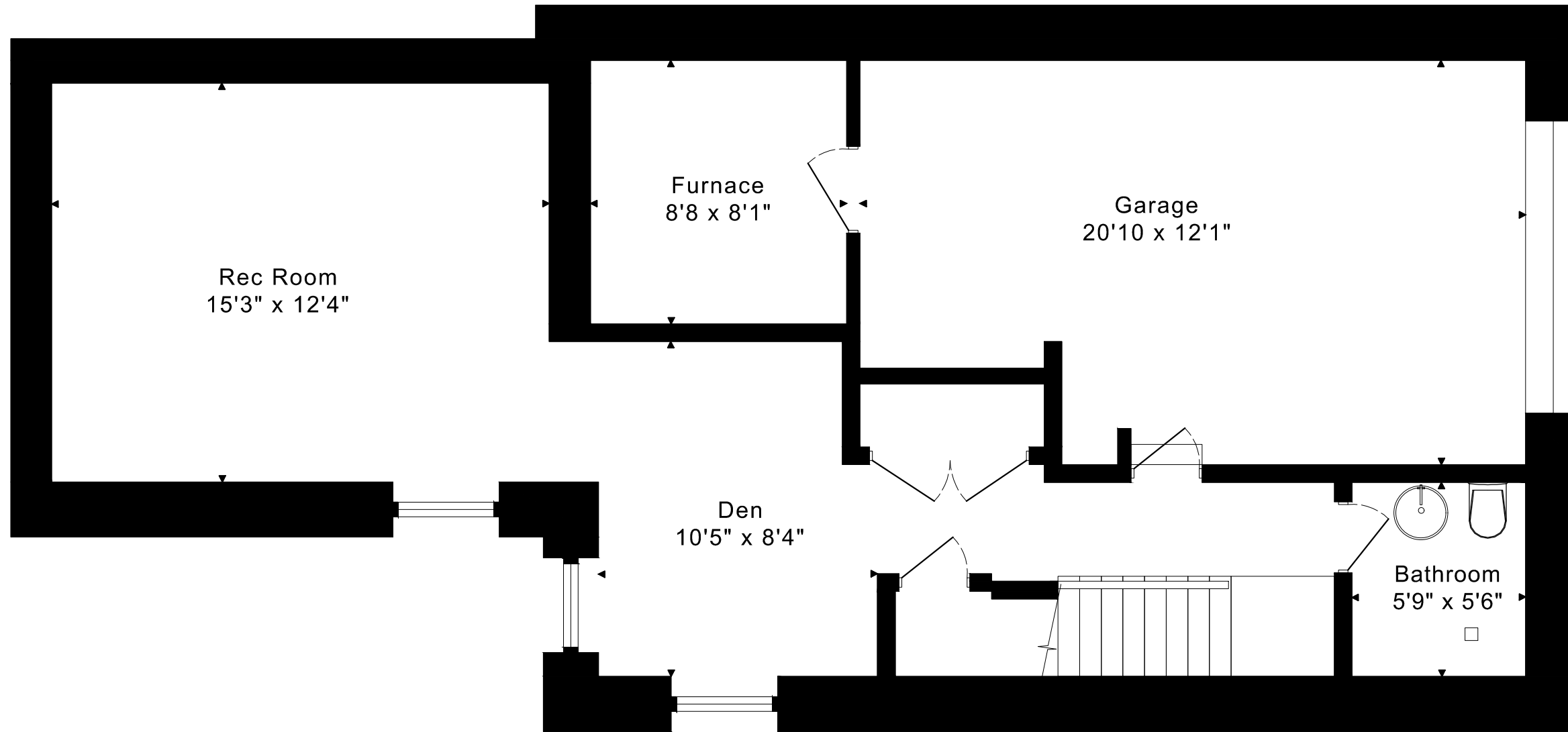
34 TRANBY AVENUE FLOOR PLANS

THIRD FLOOR 615 SQUARE FEET



34 TRANBY AVENUE FLOOR PLANS

LOWER FLOOR 660 SQUARE FEET



34 TRANBY AVENUE ROOM MEASUREMENTS

Floor	Room	Imperial						Metric [m]		
		Length		Width		Height		Length	Width	Height
		Feet	Inches	Feet	Inches	Feet	Inches			
Third	Third Bedroom	17	9	10	4	8	1	5,41	3,15	2,46
	Fourth Bedroom	15	2	11	3	7	2	4,62	3,43	2,18
	Bathroom	10	3	4	10	7	1	3,12	1,47	2,16
Second	Primary Bedroom	15	3	13	3	8	4	4,65	4,04	2,54
	Primary Ensuite	10	0	8	9	8	2	3,05	2,67	2,49
	Walk in Closet	9	0	6	10	8	4	2,74	2,08	2,54
	Second Bedroom	11	3	11	1	8	3	3,43	3,38	2,51
	Second Ensuite	7	11	5	1	8	3	2,41	1,55	2,51
	Den	11	8	8	10	8	3	3,56	2,69	2,51
Main	Entry	6	6	5	1	9	2	1,98	1,55	2,79
	Living Room	17	3	13	3	9	2	5,26	4,04	2,79
	Dining Room	14	4	13	1	9	2	4,37	3,99	2,79
	Kitchen	16	3	13	3	9	2	4,95	4,04	2,79
Lower	Rec Room	15	3	12	4	8	1	4,65	3,76	2,46
	Den	10	5	8	4	8	0	3,18	2,54	2,44
	Bathroom	5	9	5	6	8	0	1,75	1,68	2,44
	Furnace	8	8	8	1	6	10	2,64	2,46	2,08
	Garage	20	10	12	1	6	10	6,35	3,68	2,08

CAPTURED ON: 21 MAR 2025
 DIMENSIONS ARE APPROXIMATE AND SHOULD BE CONSIDERED
 ILLUSTRATIVE ONLY.

2525 sq ft + 660 sq ft
 BELOW GRADE

The following is a disclaimer regarding the approximate nature of dimensions and floor areas listed in this document:

Disclaimer:

The dimensions and floor areas listed in this document are provided as an estimate only and are intended to be used for illustration purposes only. These measurements are not necessarily meant to be a perfect representation of the actual space.

Notes regarding measurement methods and accuracy:

The utilization of laser measurement technology during the 3D model capturing process at the location provides an accurate representation of floor plans, with a typical margin of error of 3-5%. For the most accurate and official measurement data, it is advised to consult official documents such as MPAC records, builder's pre-construction plans, or data from certified measurement companies.

Exterior wall thickness is included in the calculation of the overall square footage and is considered as a component of the footprint. The wall thickness measurement is obtained onsite whenever possible, or estimated in the event where obtaining onsite measurements is not possible, such as in the case of condominium buildings where wall thickness may vary throughout the building.