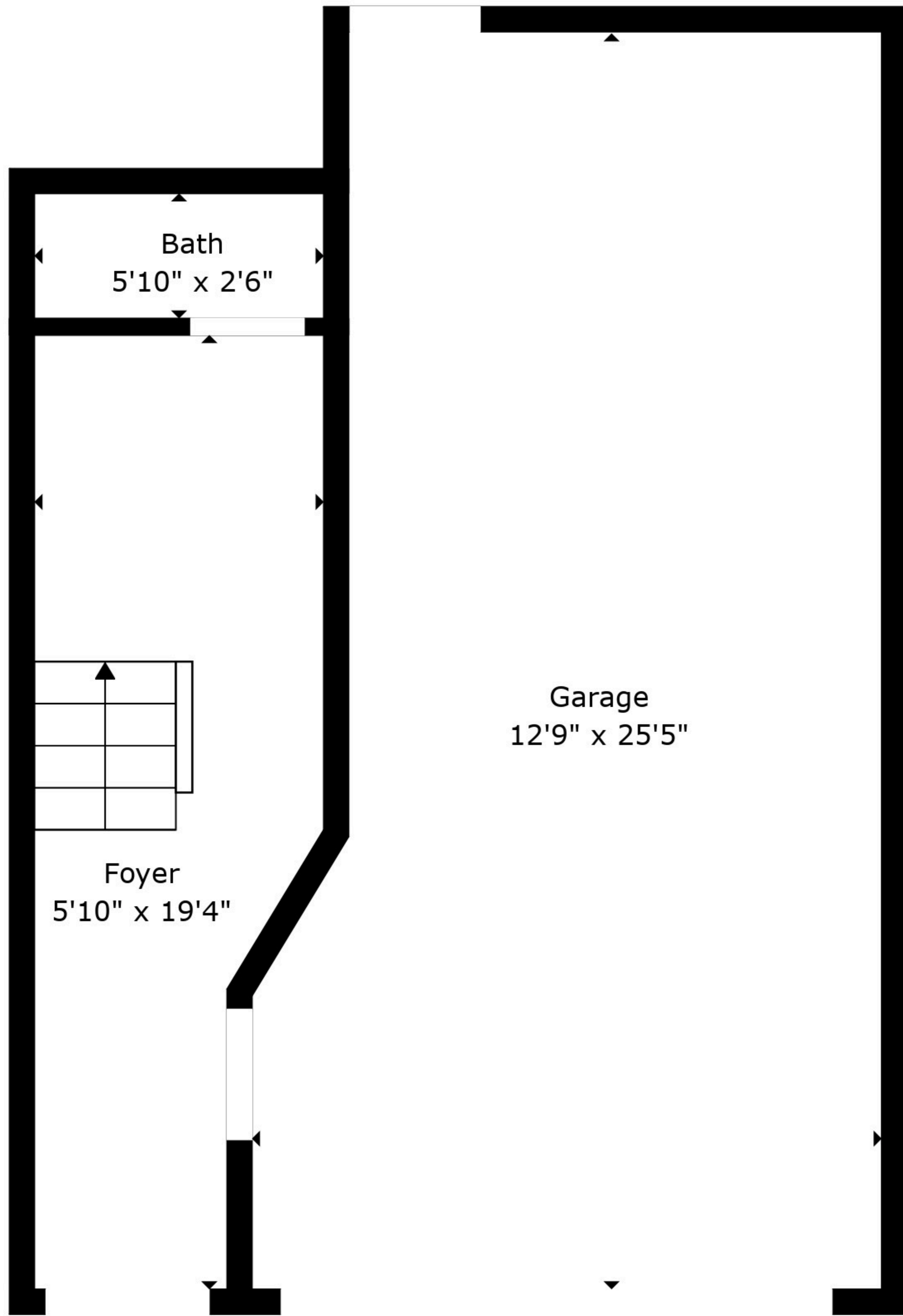
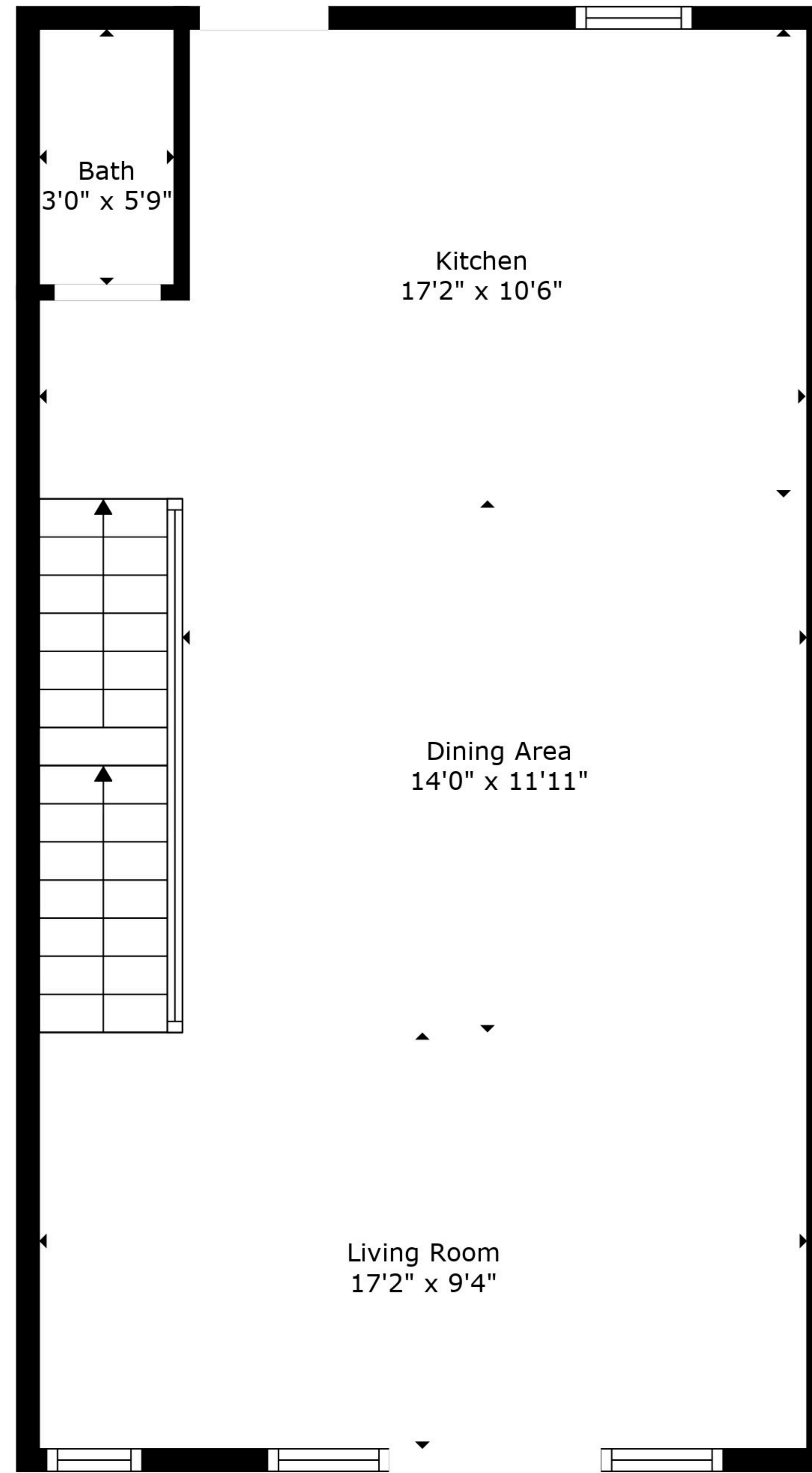


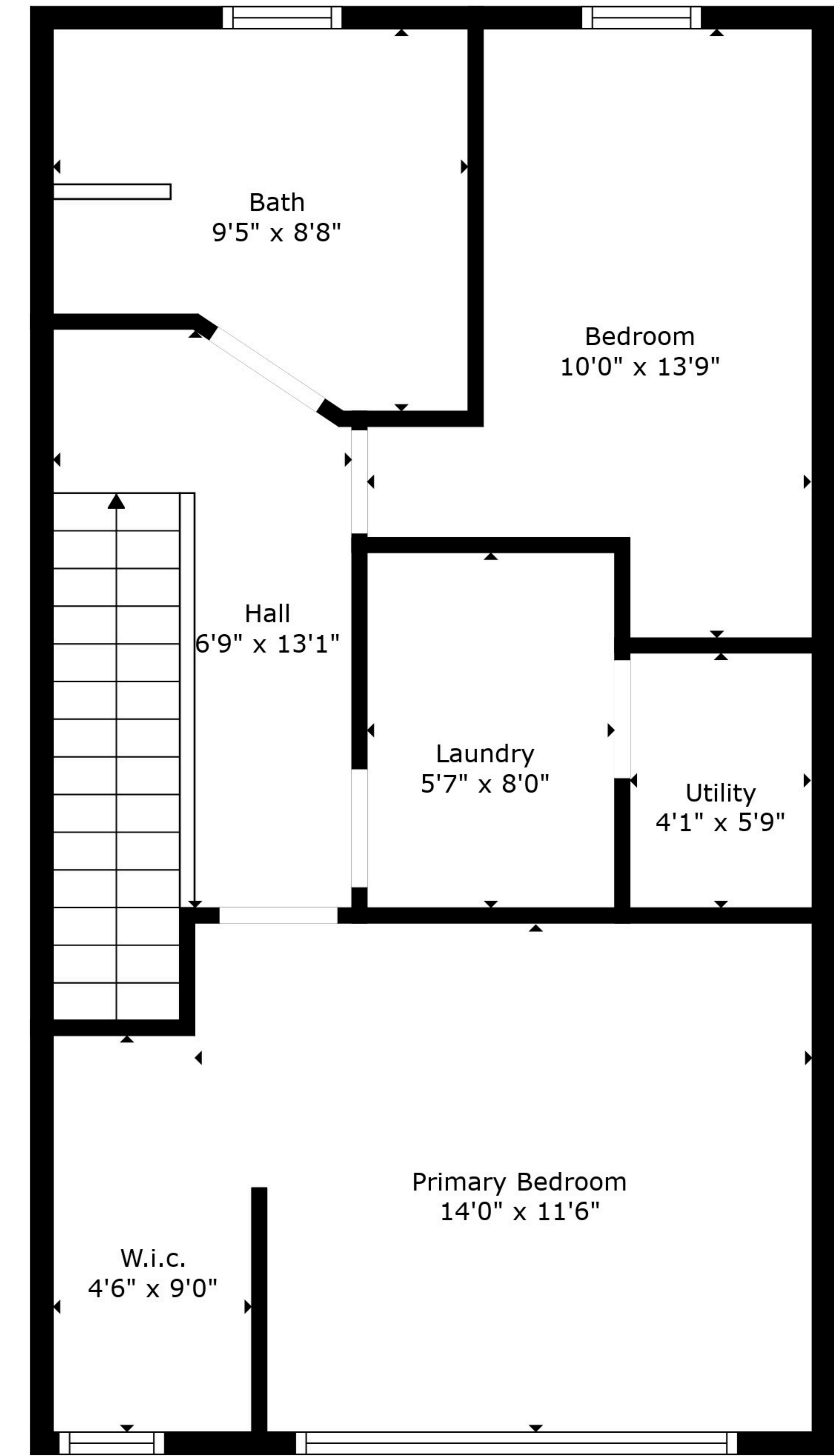
# 1239 Bloor Street West Laneway House



Floor 1



Floor 2



Floor 3

**TOTAL: 1204 sq. ft**  
BELOW GROUND: 115 sq. ft, FLOOR 2: 544 sq. ft, FLOOR 3: 545 sq. ft  
EXCLUDED AREAS: GARAGE: 290 sq. ft