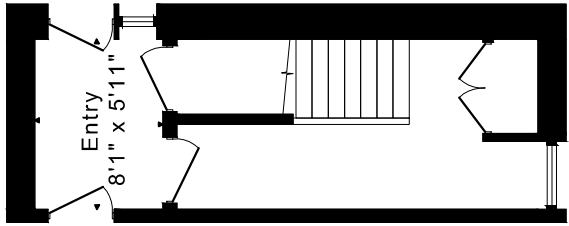
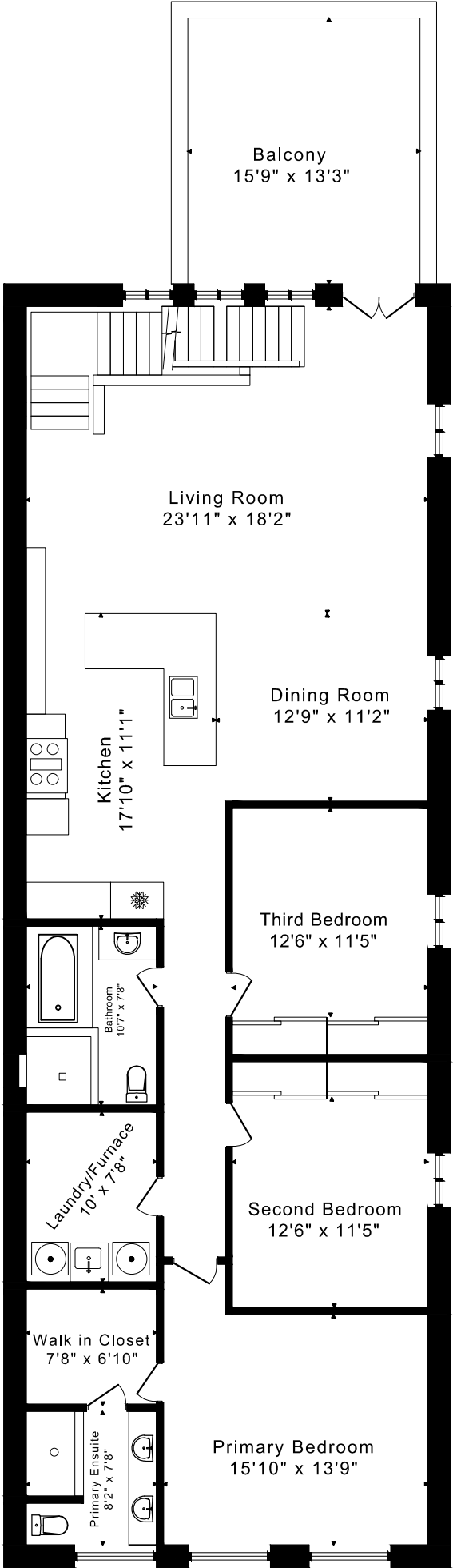


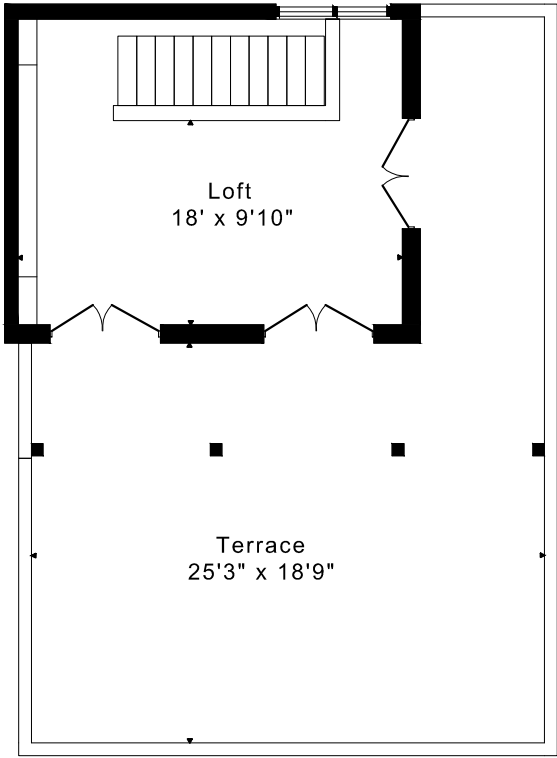
967 OSSINGTON AVENUE FLOOR PLANS



MAIN FLOOR
280 SQUARE FEET



SECOND FLOOR
2065 SQUARE FEET



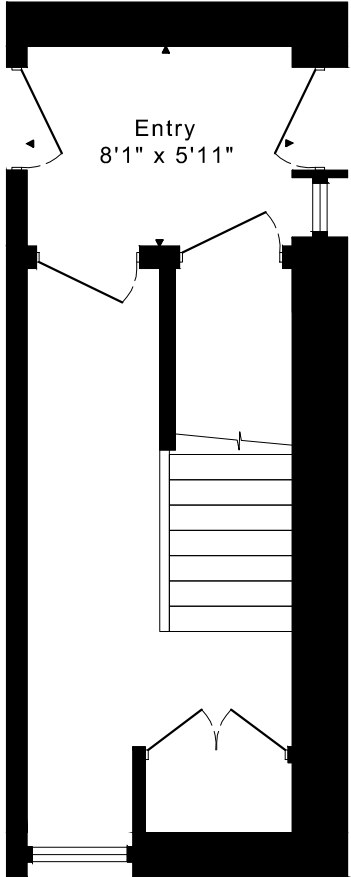
THIRD FLOOR
325 SQUARE FEET

2670 sq ft

CAPTURED ON: 18 SEP 2024
DIMENSIONS ARE APPROXIMATE AND SHOULD BE CONSIDERED
ILLUSTRATIVE ONLY.

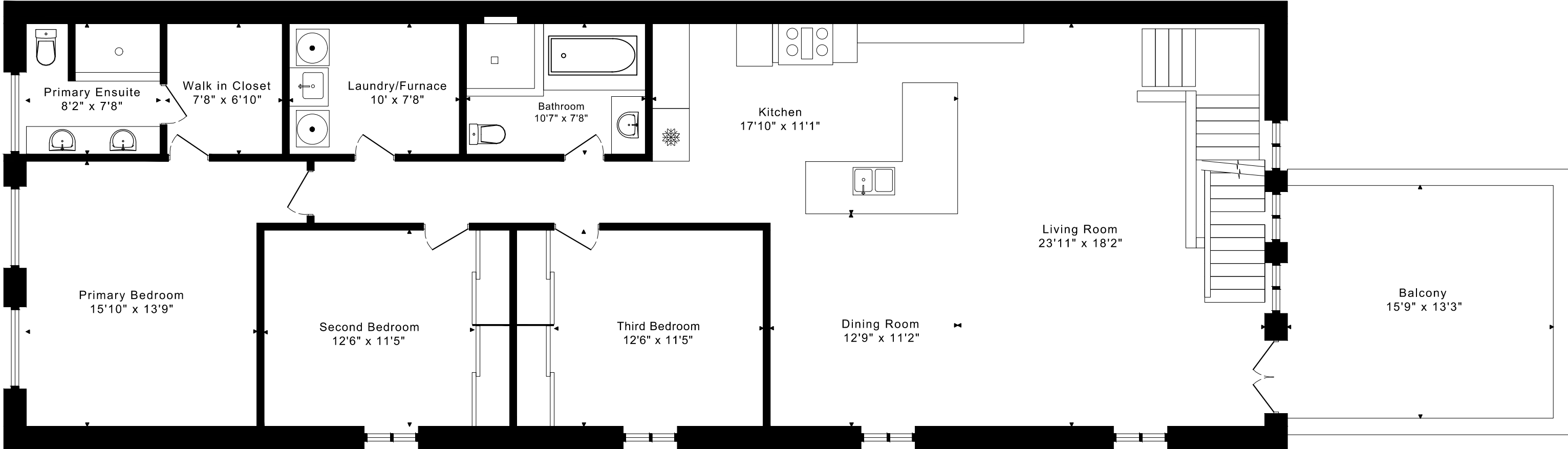
967 OSSINGTON AVENUE FLOOR PLANS

MAIN FLOOR 280 SQUARE FEET



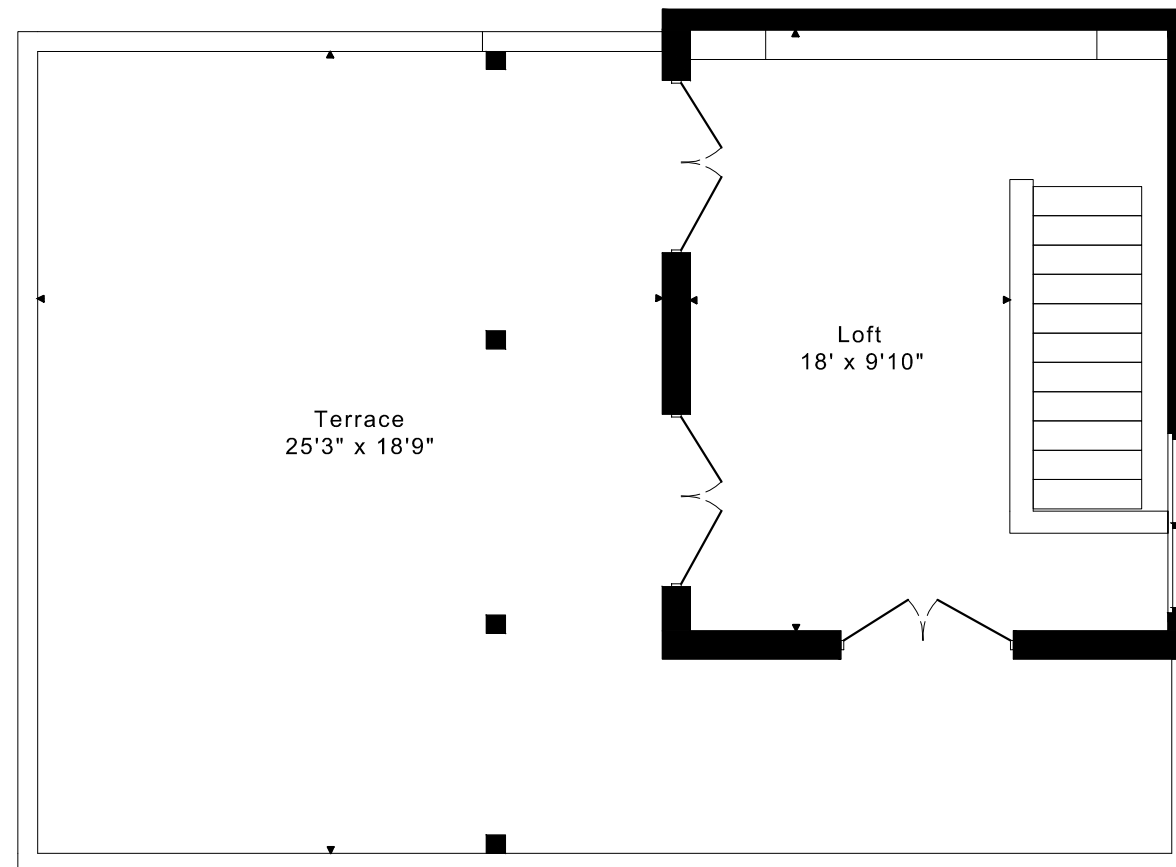
967 OSSINGTON AVENUE FLOOR PLANS

SECOND FLOOR 2065 SQUARE FEET



967 OSSINGTON AVENUE FLOOR PLANS

THIRD FLOOR 325 SQUARE FEET



967 OSSINGTON AVENUE ROOM MEASUREMENTS

Floor	Room	Imperial				Metric [m]	
		Length		Width		Length	Width
		Feet	Inches	Feet	Inches		
Third	Loft	18	0	9	10	5,49	3,00
	Terrace	25	3	18	9	7,70	5,72
Second	Living Room	23	11	18	2	7,29	5,54
	Dining Room	12	9	11	2	3,89	3,40
	Kitchen	17	10	11	1	5,44	3,38
	Primary Bedroom	15	10	13	9	4,83	4,19
	Primary Ensuite	8	2	7	8	2,49	2,34
	Walk in Closet	7	8	6	10	2,34	2,08
	Second Bedroom	12	6	11	5	3,81	3,48
	Third Bedroom	12	6	11	5	3,81	3,48
	Bathroom	10	7	7	8	3,23	2,34
	Laundry/Furnace	10	0	7	8	3,05	2,34
	Balcony	15	9	13	3	4,80	4,04
Main	Entry	8	1	5	11	2,46	1,80

CAPTURED ON: 18 SEP 2024
 DIMENSIONS ARE APPROXIMATE AND SHOULD BE CONSIDERED
 ILLUSTRATIVE ONLY.

2670 sq ft

The following is a disclaimer regarding the approximate nature of dimensions and floor areas listed in this document:

Disclaimer:

The dimensions and floor areas listed in this document are provided as an estimate only and are intended to be used for illustration purposes only. These measurements are not necessarily meant to be a perfect representation of the actual space.

Notes regarding measurement methods and accuracy:

The utilization of laser measurement technology during the 3D model capturing process at the location provides an accurate representation of floor plans, with a typical margin of error of 3-5%. For the most accurate and official measurement data, it is advised to consult official documents such as MPAC records, builder's pre-construction plans, or data from certified measurement companies.

Exterior wall thickness is included in the calculation of the overall square footage and is considered as a component of the footprint. The wall thickness measurement is obtained onsite whenever possible, or estimated in the event where obtaining onsite measurements is not possible, such as in the case of condominium buildings where wall thickness may vary throughout the building.