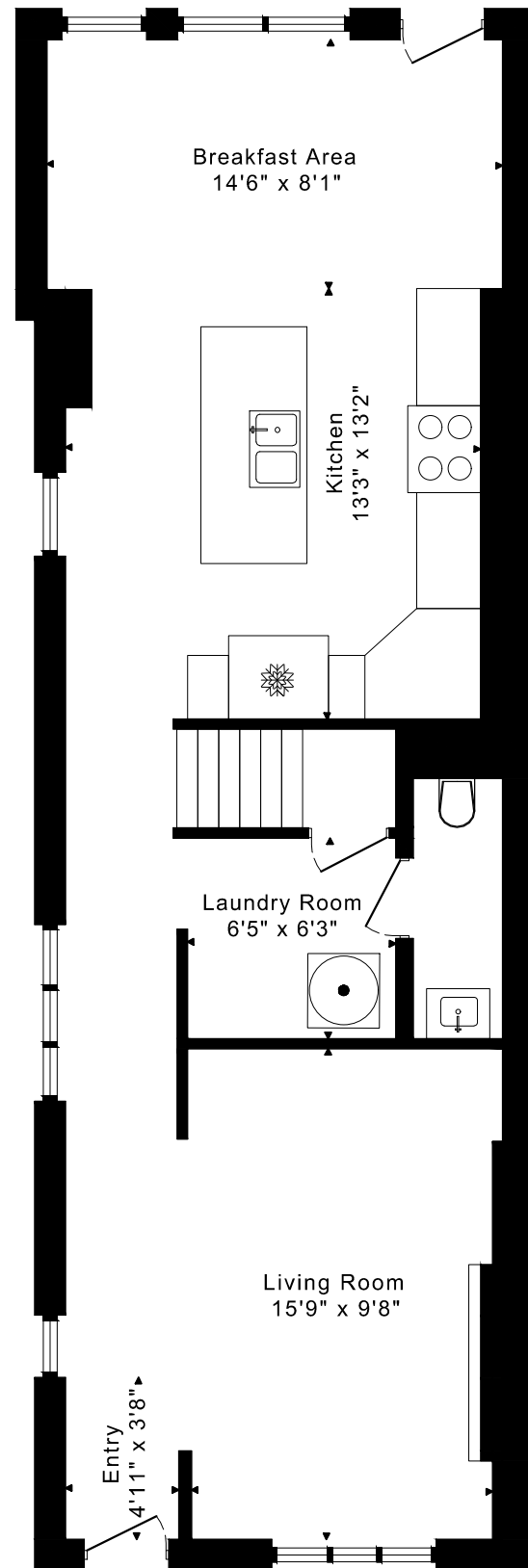
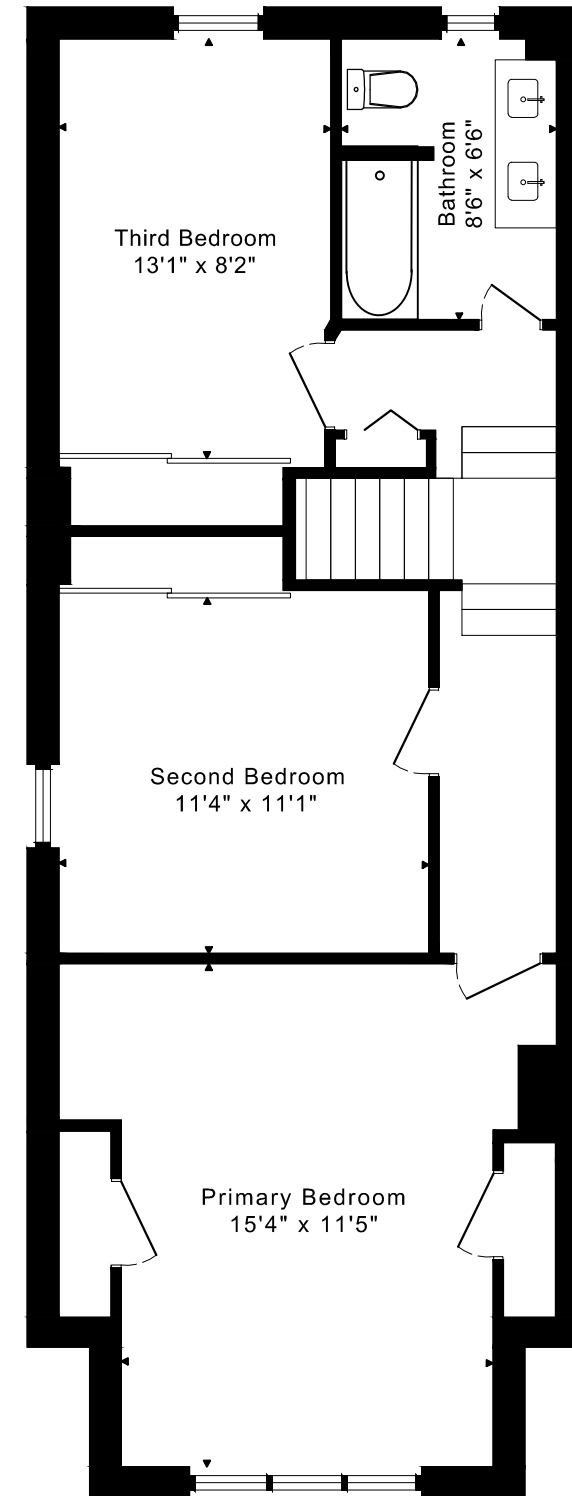


50 LAMB AVENUE FLOOR PLANS



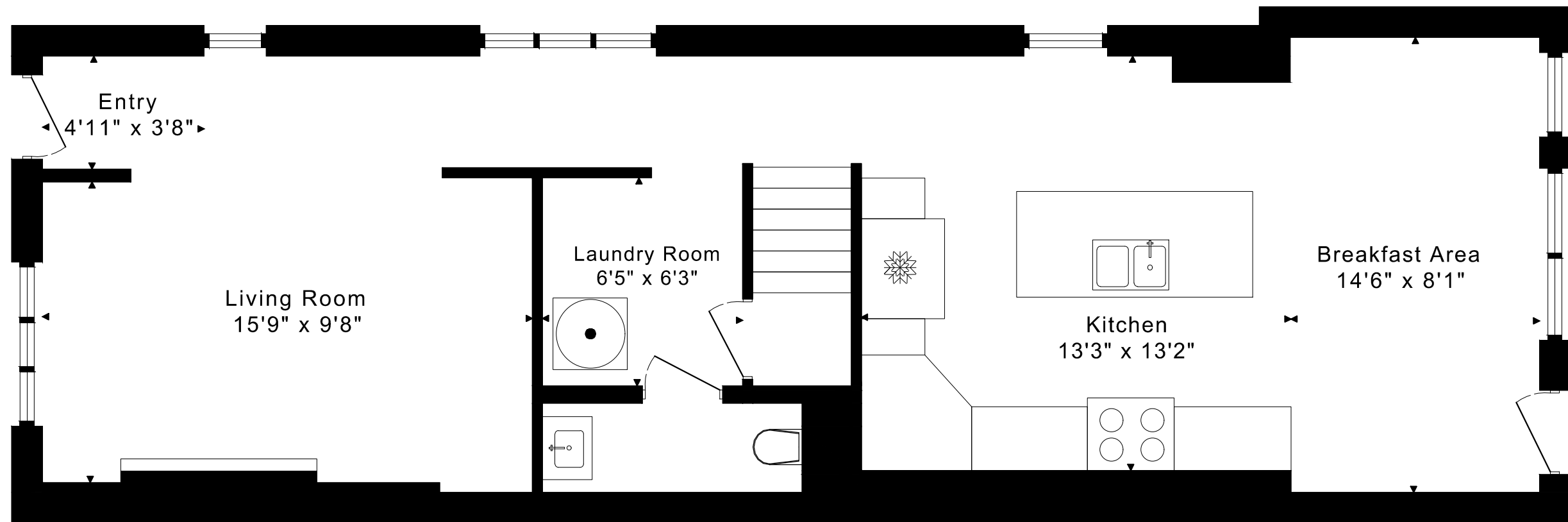
MAIN FLOOR
795 SQUARE FEET



SECOND FLOOR
770 SQUARE FEET

1565 sq ft

50 LAMB AVENUE
FLOOR PLANS
MAIN FLOOR 795 SQUARE FEET



50 LAMB AVENUE
FLOOR PLANS
SECOND FLOOR 770 SQUARE FEET



50 LAMB AVENUE ROOM MEASUREMENTS

Floor	Room	Imperial				Metric [m]	
		Length		Width		Length	Width
		Feet	Inches	Feet	Inches		
Second	Primary Bedroom	15	4	11	5	4,67	3,48
	Second Bedroom	11	4	11	1	3,45	3,38
	Third Bedroom	13	1	8	2	3,99	2,49
	Bathroom	8	6	6	6	2,59	1,98
Main	Entry	4	11	3	8	1,50	1,12
	Living Room	15	9	9	8	4,80	2,95
	Kitchen	13	3	13	2	4,04	4,01
	Breakfast Area	14	6	8	1	4,42	2,46
	Laundry Room	6	5	6	3	1,96	1,91

CAPTURED ON: 8 APR 2023
 DIMENSIONS ARE APPROXIMATE AND SHOULD BE CONSIDERED
 ILLUSTRATIVE ONLY.

1565 sq ft

The following is a disclaimer regarding the approximate nature of dimensions and floor areas listed in this document:

Disclaimer:

The dimensions and floor areas listed in this document are provided as an estimate only and are intended to be used for illustration purposes only. These measurements are not necessarily meant to be a perfect representation of the actual space.

Notes regarding measurement methods and accuracy:

The utilization of laser measurement technology during the 3D model capturing process at the location provides an accurate representation of floor plans, with a typical margin of error of 3-5%. For the most accurate and official measurement data, it is advised to consult official documents such as MPAC records, builder's pre-construction plans, or data from certified measurement companies.

Exterior wall thickness is included in the calculation of the overall square footage and is considered as a component of the footprint. The wall thickness measurement is obtained onsite whenever possible, or estimated in the event where obtaining onsite measurements is not possible, such as in the case of condominium buildings where wall thickness may vary throughout the building.