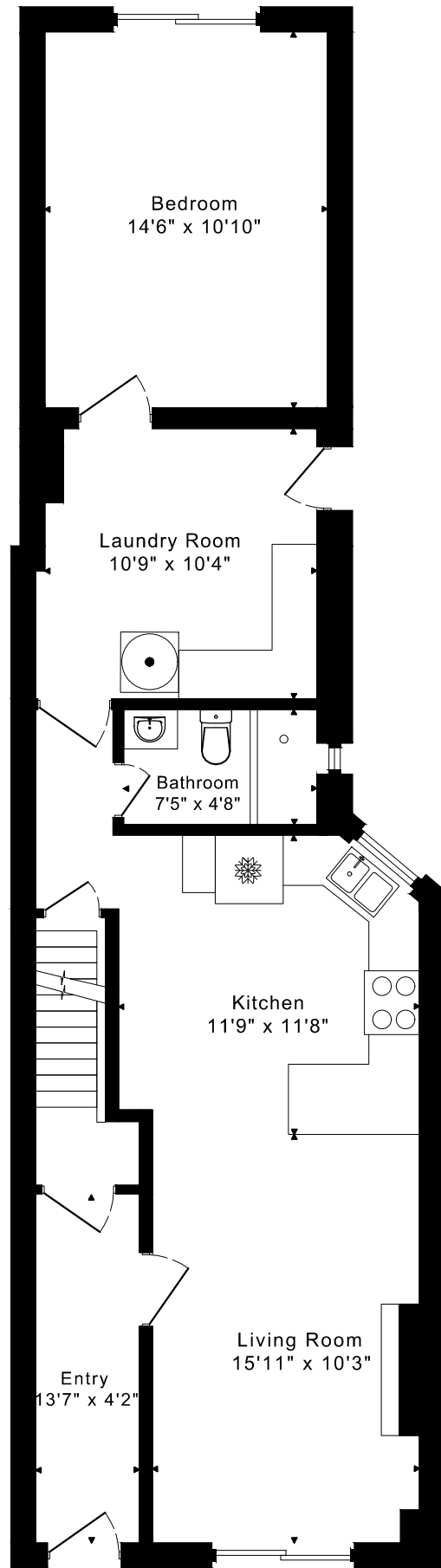
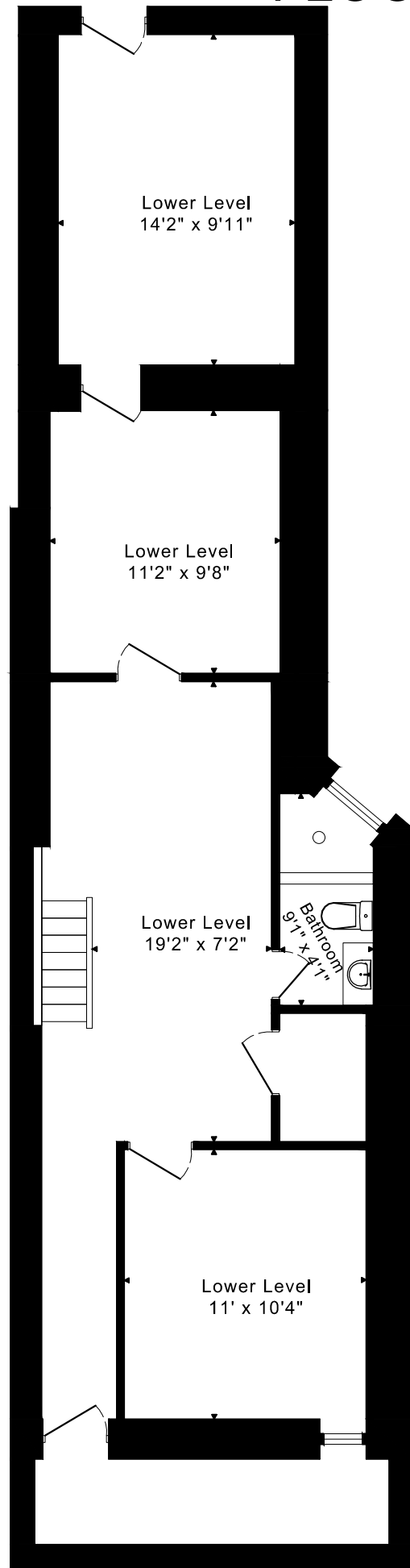


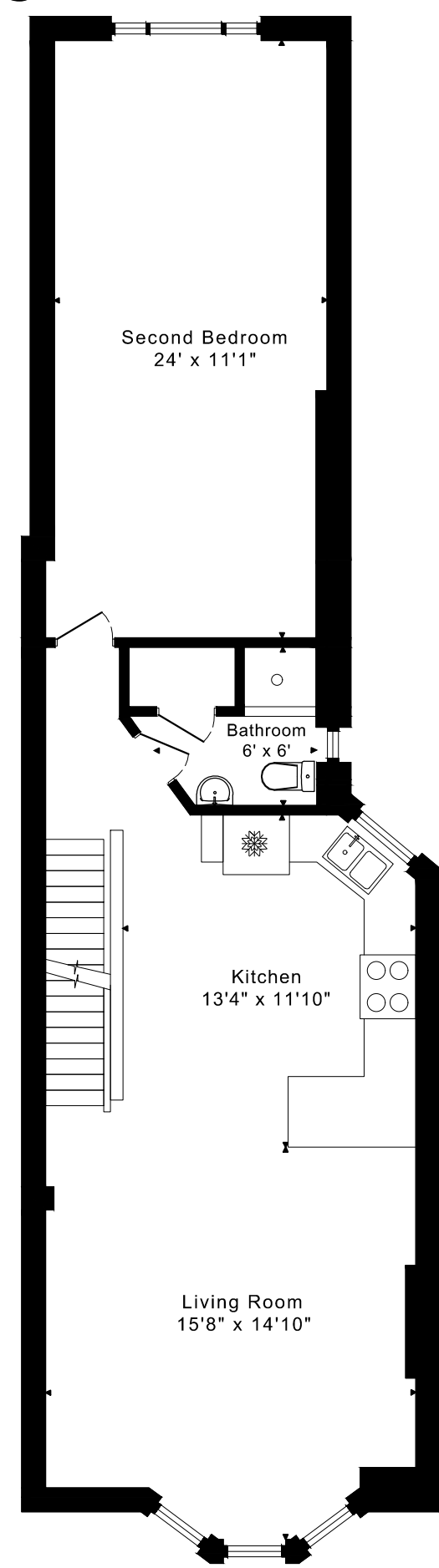
652 MARKHAM STREET FLOOR PLANS



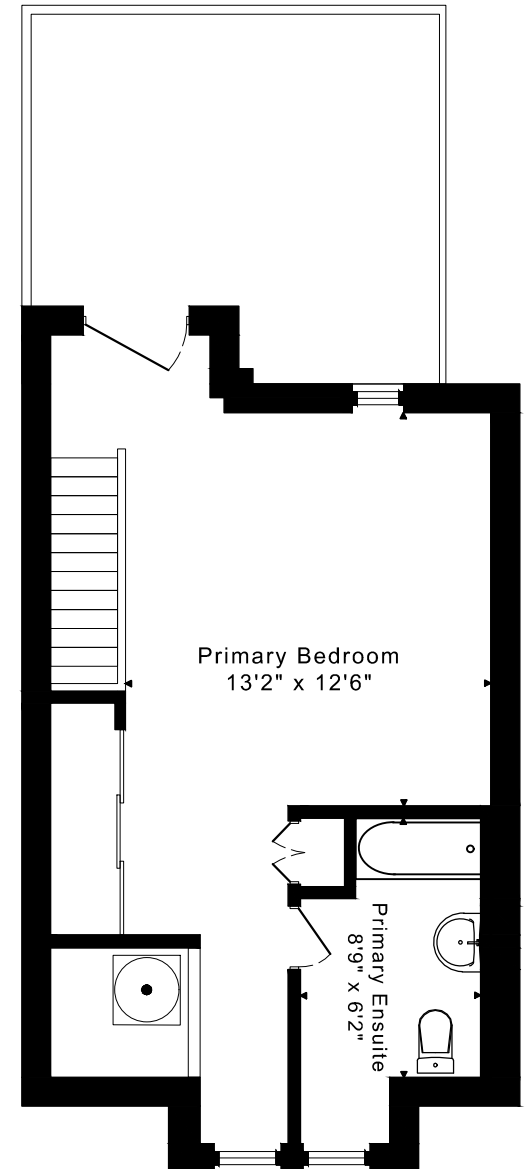
MAIN FLOOR
920 SQUARE FEET



LOWER FLOOR
995 SQUARE FEET



SECOND FLOOR
925 SQUARE FEET



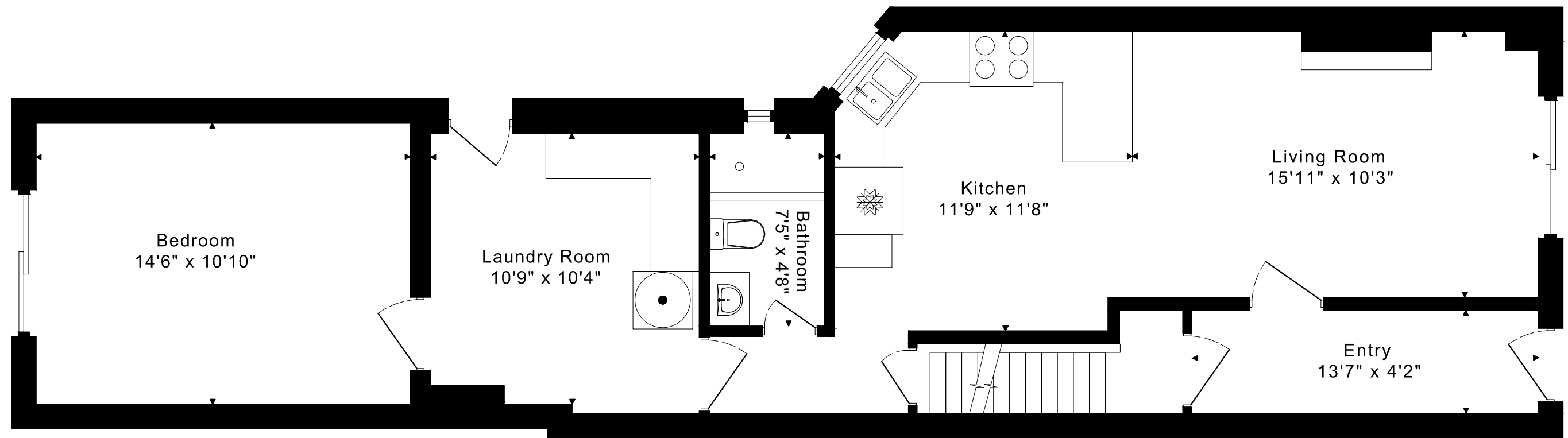
THIRD FLOOR
455 SQUARE FEET

**2300 sq ft + 995 sq ft
BELOW GRADE**

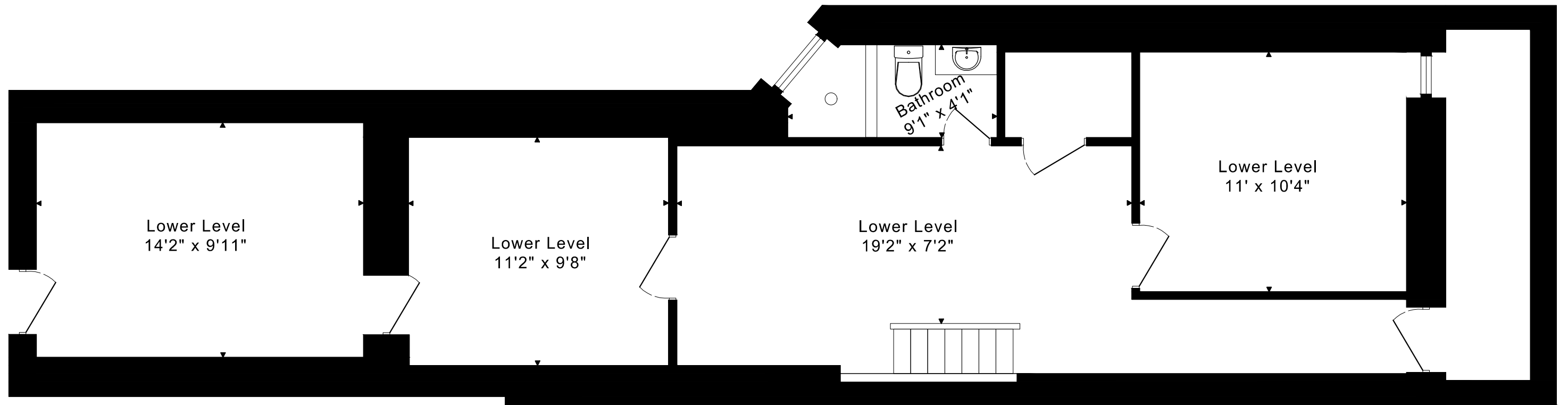
CAPTURED ON: 15 MAR 2023
DIMENSIONS ARE APPROXIMATE AND SHOULD BE CONSIDERED
ILLUSTRATIVE ONLY.

652 MARKHAM STREET FLOOR PLANS

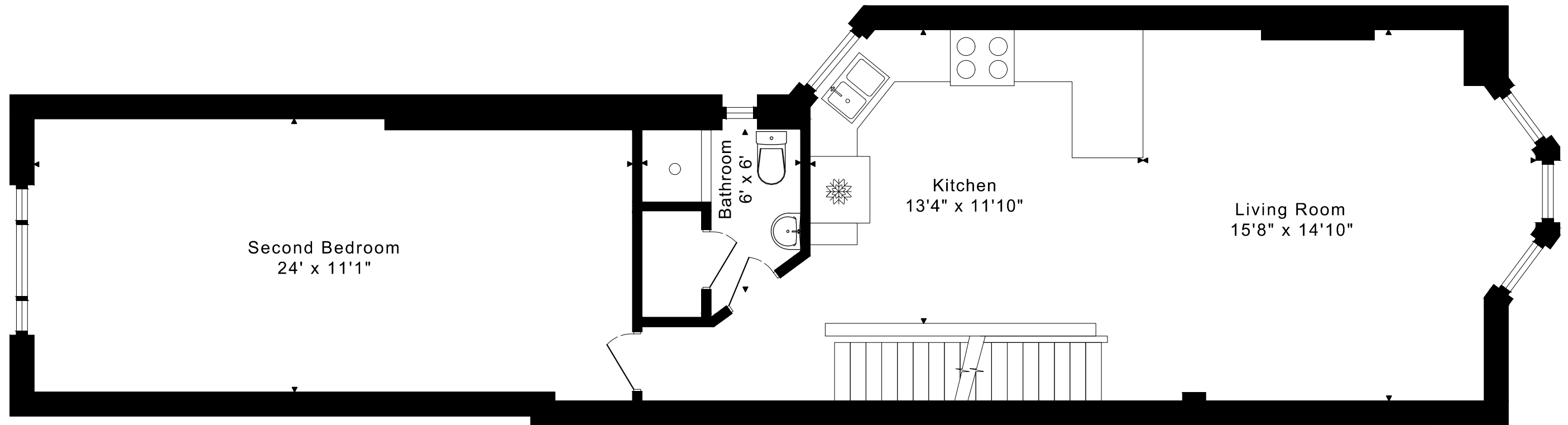
MAIN FLOOR 920 SQUARE FEET



652 MARKHAM STREET
FLOOR PLANS
LOWER FLOOR 995 SQUARE FEET

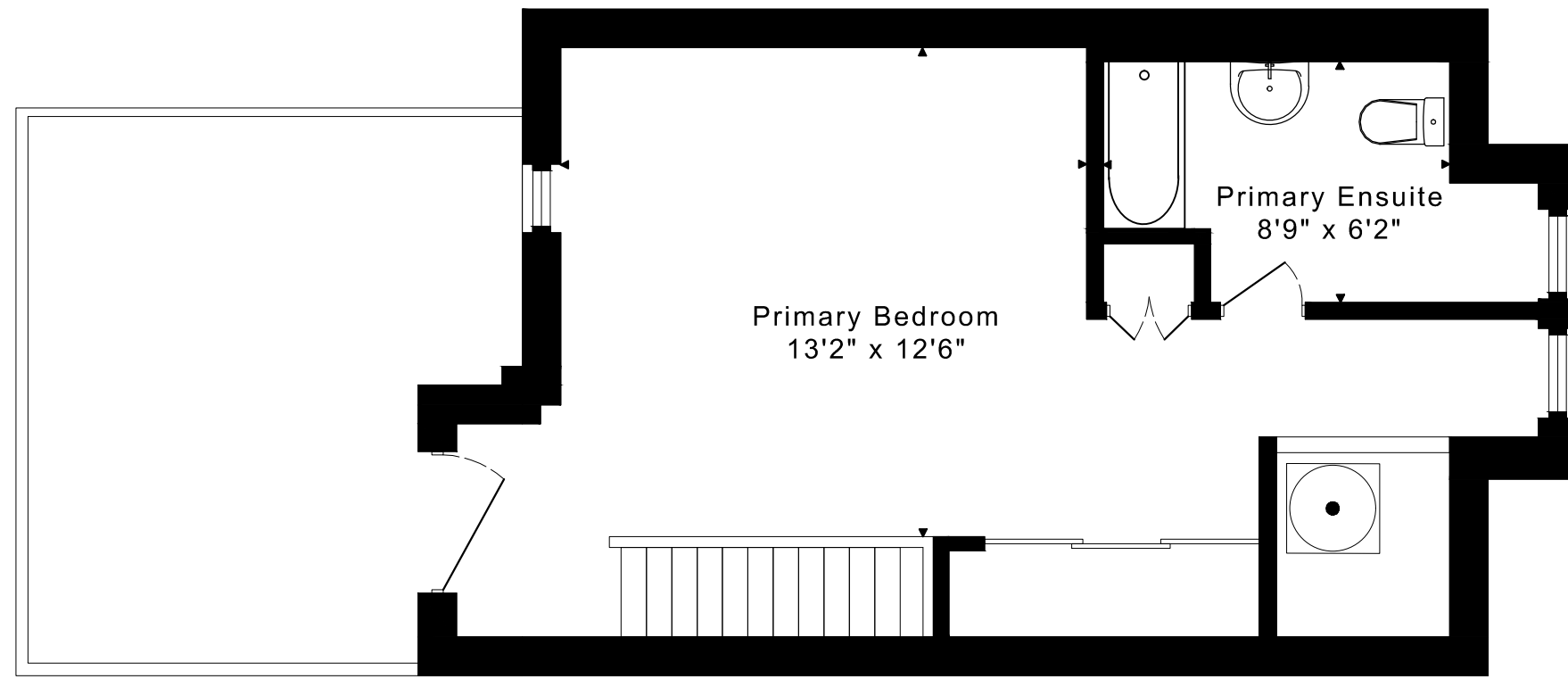


652 MARKHAM STREET
FLOOR PLANS
SECOND FLOOR 925 SQUARE FEET



652 MARKHAM STREET FLOOR PLANS

THIRD FLOOR 455 SQUARE FEET



652 MARKHAM STREET ROOM MEASUREMENTS

Floor	Room	Imperial				Metric [m]	
		Length		Width		Length	Width
		Feet	Inches	Feet	Inches		
Third Second Unit	Primary Bedroom	13	2	12	6	4,01	3,81
	Primary Ensuite	8	9	6	2	2,67	1,88
Second Second Unit	Living Room	15	8	14	10	4,78	4,52
	Kitchen	13	4	11	10	4,06	3,61
	Second Bedroom	24	0	11	1	7,32	3,38
	Bathroom	6	0	6	0	1,83	1,83
Main First Unit	Entry	13	7	4	2	4,14	1,27
	Living Room	15	11	10	3	4,85	3,12
	Kitchen	11	9	11	8	3,58	3,56
	Bedroom	14	6	10	10	4,42	3,30
	Bathroom	7	5	4	8	2,26	1,42
	Laundry Room	10	9	10	4	3,28	3,15
Lower First Unit	Lower Level	19	2	7	2	5,84	2,18
	Lower Level	11	0	10	4	3,35	3,15
	Lower Level	11	2	9	8	3,40	2,95
	Lower Level	14	2	9	11	4,32	3,02
	Bathroom	9	1	4	1	2,77	1,24

CAPTURED ON: 15 MAR 2023
 DIMENSIONS ARE APPROXIMATE AND SHOULD BE CONSIDERED
 ILLUSTRATIVE ONLY.

2300 sq ft + 995sq ft
 BELOW GRADE

The following is a disclaimer regarding the approximate nature of dimensions and floor areas listed in this document:

Disclaimer:

The dimensions and floor areas listed in this document are provided as an estimate only and are intended to be used for illustration purposes only. These measurements are not necessarily meant to be a perfect representation of the actual space.

Notes regarding measurement methods and accuracy:

The utilization of laser measurement technology during the 3D model capturing process at the location provides an accurate representation of floor plans, with a typical margin of error of 3-5%. For the most accurate and official measurement data, it is advised to consult official documents such as MPAC records, builder's pre-construction plans, or data from certified measurement companies.

Exterior wall thickness is included in the calculation of the overall square footage and is considered as a component of the footprint. The wall thickness measurement is obtained onsite whenever possible, or estimated in the event where obtaining onsite measurements is not possible, such as in the case of condominium buildings where wall thickness may vary throughout the building.