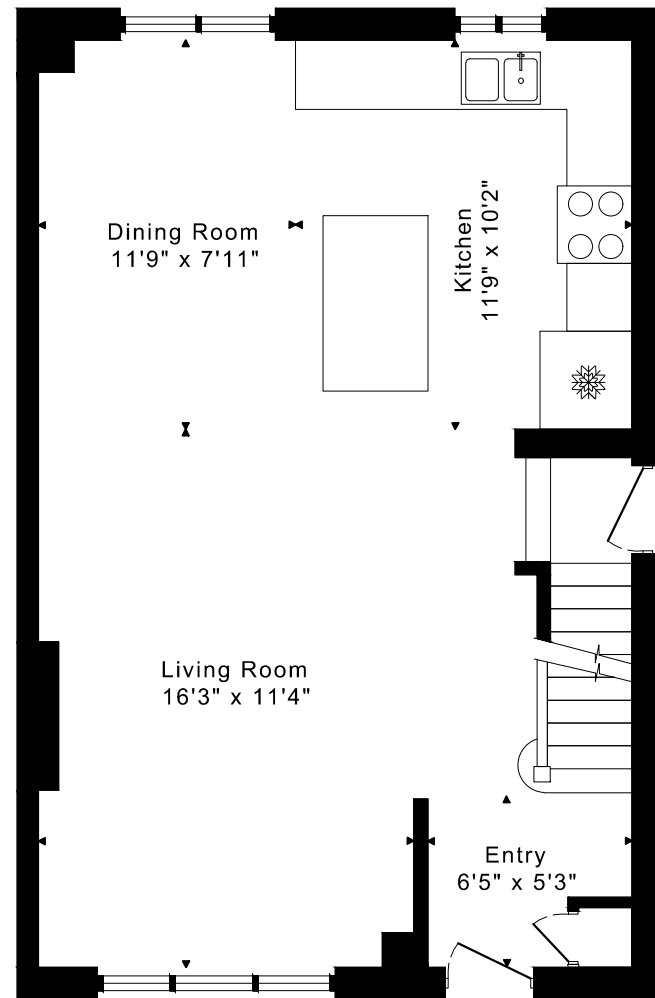
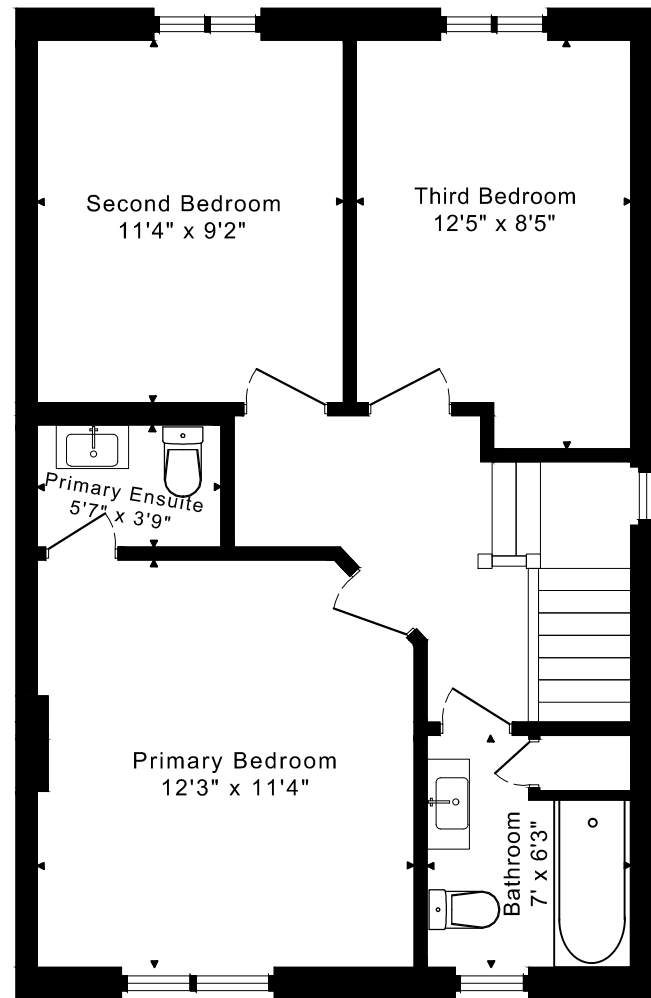


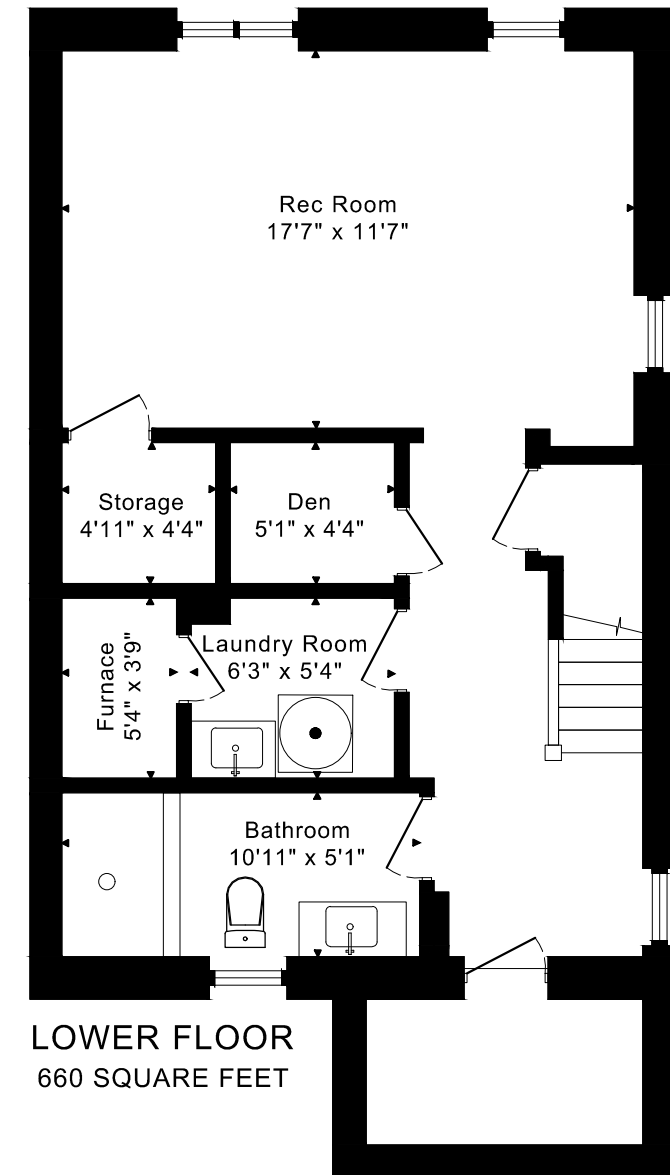
23 BELVIDERE AVENUE FLOOR PLANS



MAIN FLOOR
605 SQUARE FEET



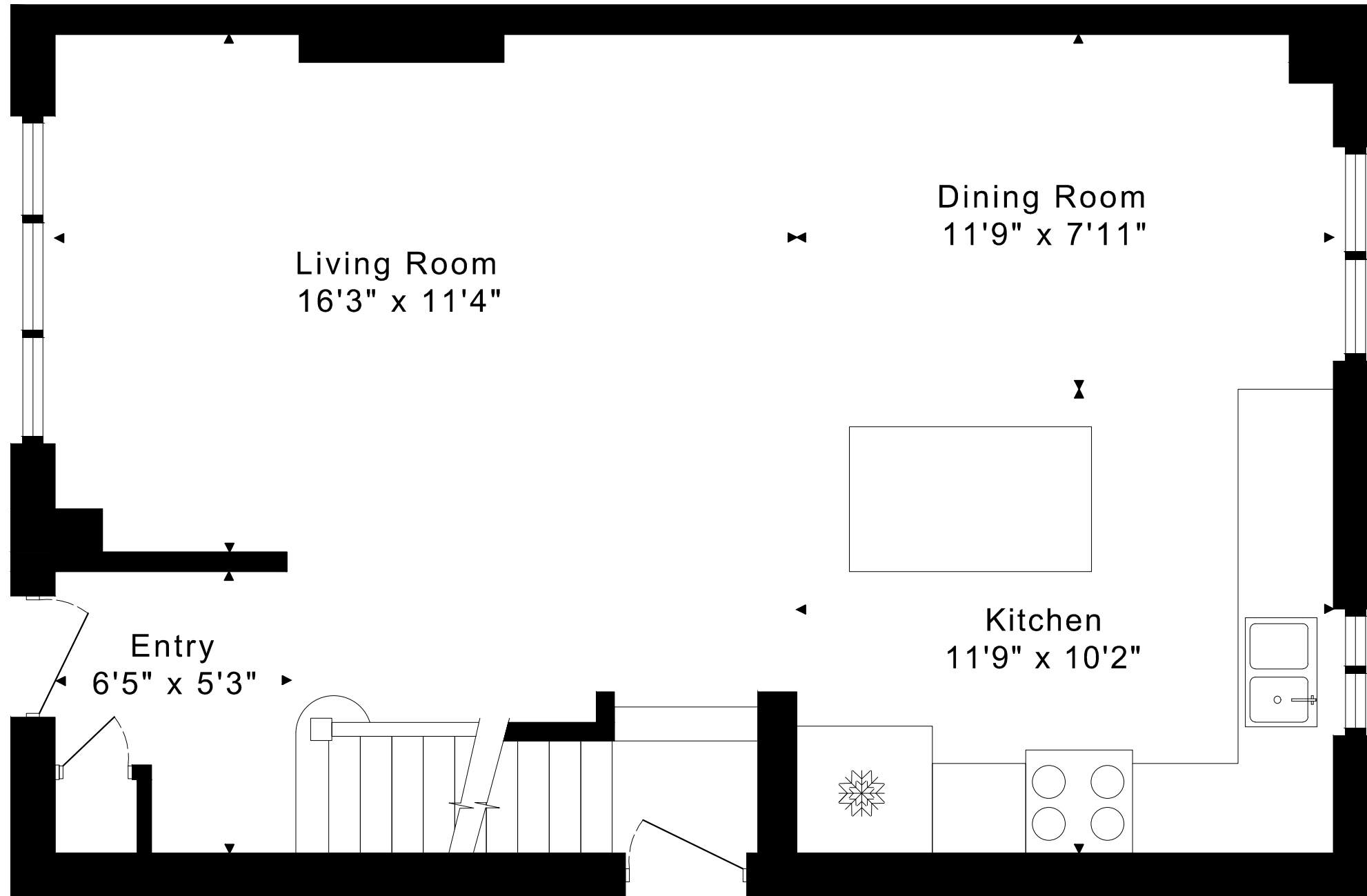
SECOND FLOOR
605 SQUARE FEET



LOWER FLOOR
660 SQUARE FEET

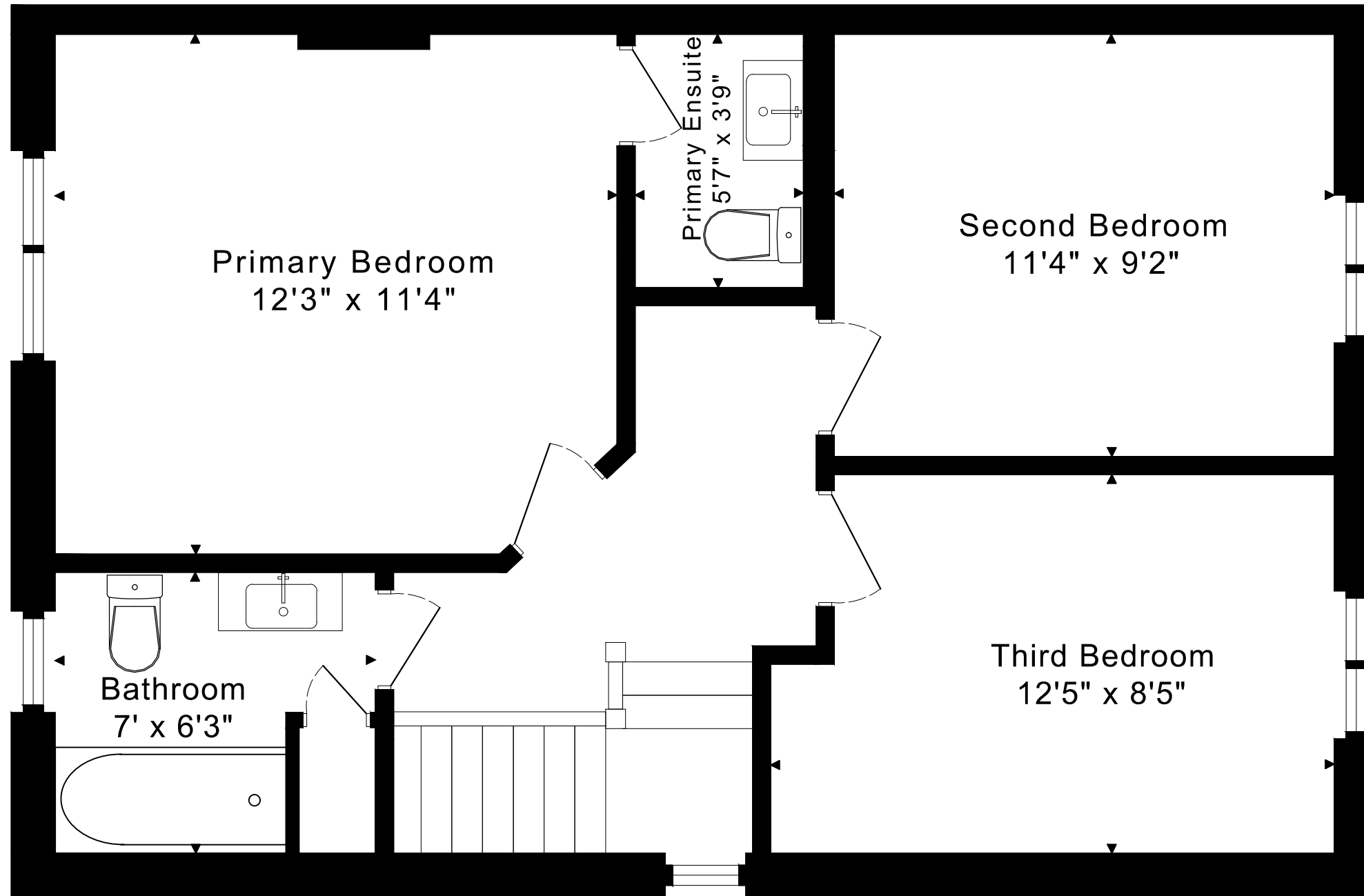
23 BELVIDERE AVENUE FLOOR PLANS

MAIN FLOOR 605 SQUARE FEET

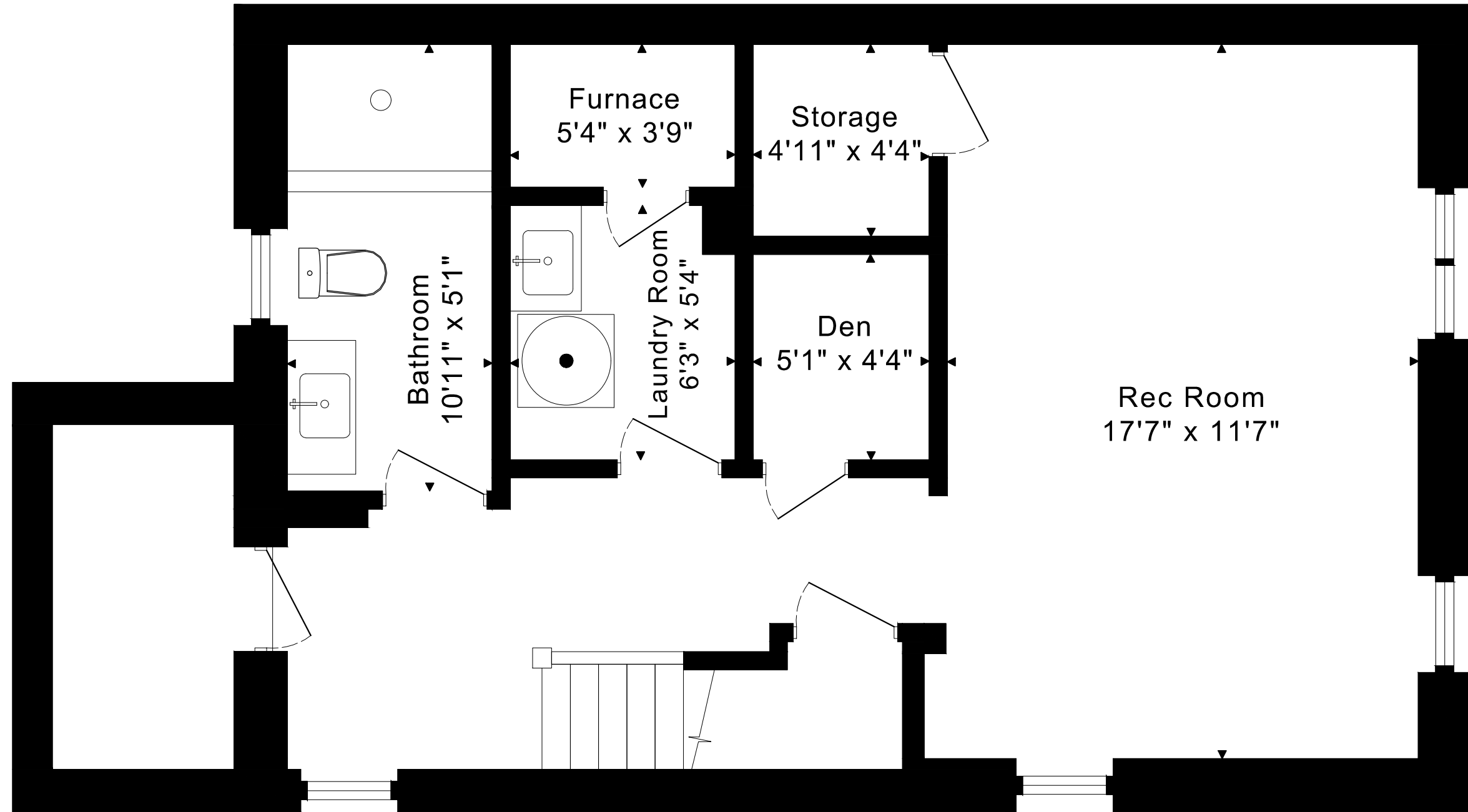


23 BELVIDERE AVENUE FLOOR PLANS

SECOND FLOOR 605 SQUARE FEET



23 BELVIDERE AVENUE
FLOOR PLANS
LOWER FLOOR 660 SQUARE FEET



23 BELVIDERE AVENUE ROOM MEASUREMENTS

Floor	Room	Imperial				Metric [m]	
		Length		Width		Length	Width
		Feet	Inches	Feet	Inches		
Second	Primary Bedroom	12	3	11	4	3,73	3,45
	Primary Ensuite	5	7	3	9	1,70	1,14
	Second Bedroom	11	4	9	2	3,45	2,79
	Bathroom	7	0	6	3	2,13	1,91
	Third Bedroom	11	0	10	2	3,35	3,10
Main	Entry	6	5	5	3	1,96	1,60
	Living Room	16	3	11	4	4,95	3,45
	Dining Room	11	9	7	11	3,58	2,41
	Kitchen	11	9	10	2	3,58	3,10
Lower	Rec Room	17	7	11	7	5,36	3,53
	Bathroom	10	11	5	1	3,33	1,55
	Laundry Room	6	3	5	4	1,91	1,63
	Den	5	1	4	4	1,55	1,32
	Storage	4	11	4	4	1,50	1,32
	Furnace	5	4	3	9	1,63	1,14

CAPTURED ON: 9 FEB 2023
 DIMENSIONS ARE APPROXIMATE AND SHOULD BE CONSIDERED
 ILLUSTRATIVE ONLY.

1210 sq ft + 660 sq ft
 BELOW GRADE

The following is a disclaimer regarding the approximate nature of dimensions and floor areas listed in this document:

Disclaimer:

The dimensions and floor areas listed in this document are provided as an estimate only and are intended to be used for illustration purposes only. These measurements are not necessarily meant to be a perfect representation of the actual space.

Notes regarding measurement methods and accuracy:

The utilization of laser measurement technology during the 3D model capturing process at the location provides an accurate representation of floor plans, with a typical margin of error of 3-5%. For the most accurate and official measurement data, it is advised to consult official documents such as MPAC records, builder's pre-construction plans, or data from certified measurement companies.

Exterior wall thickness is included in the calculation of the overall square footage and is considered as a component of the footprint. The wall thickness measurement is obtained onsite whenever possible, or estimated in the event where obtaining onsite measurements is not possible, such as in the case of condominium buildings where wall thickness may vary throughout the building.