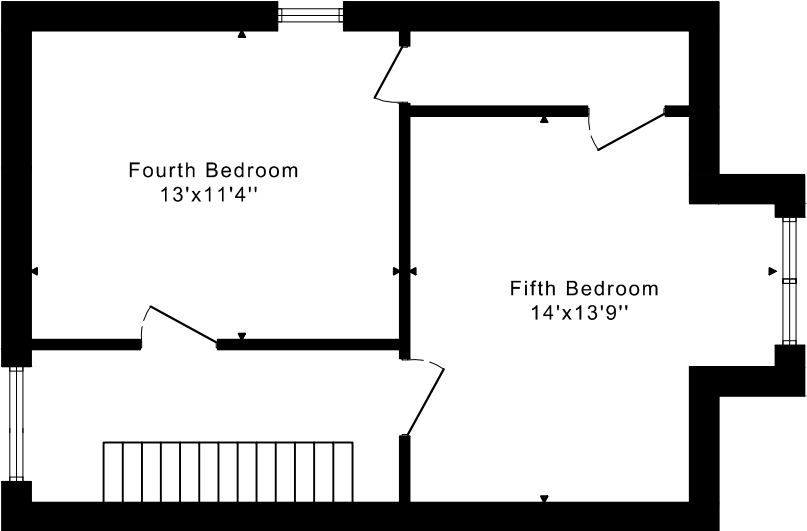
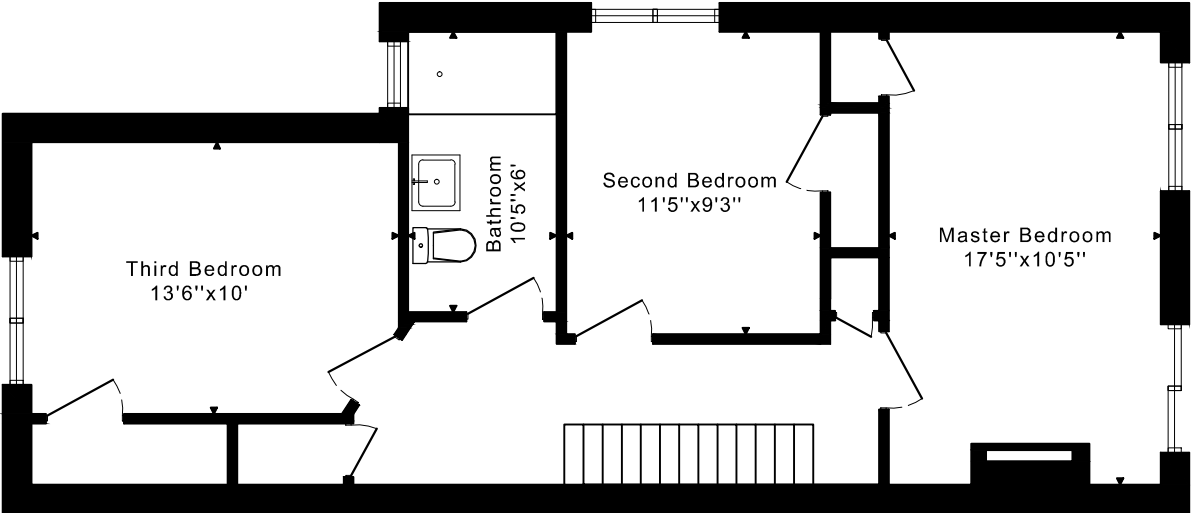


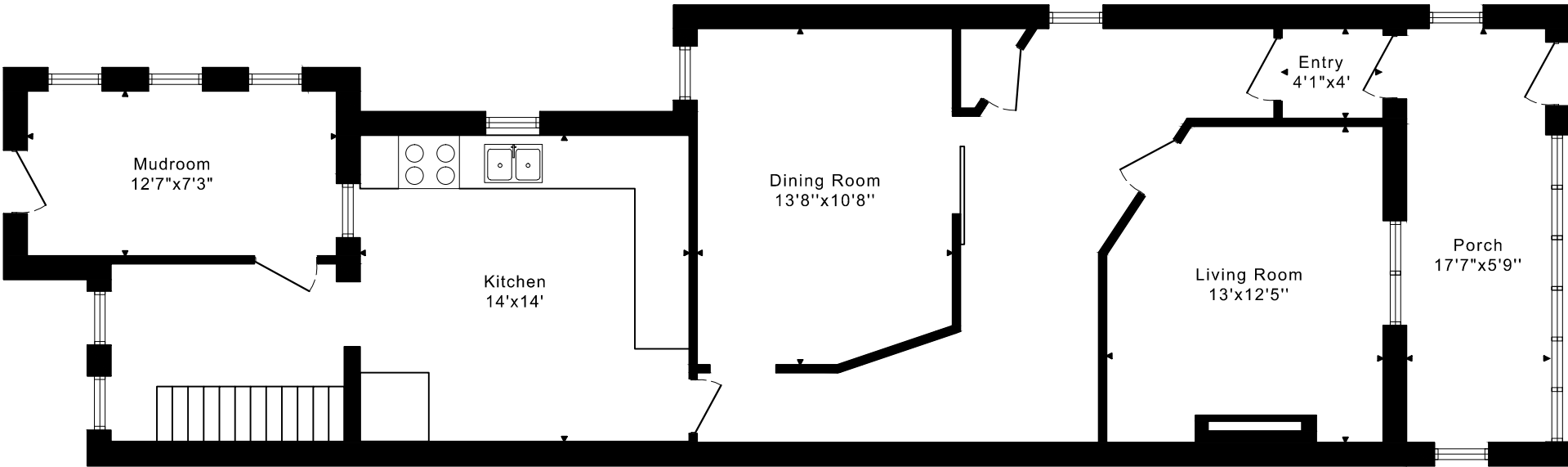
# 475 OSSINGTON AVENUE FLOOR PLANS



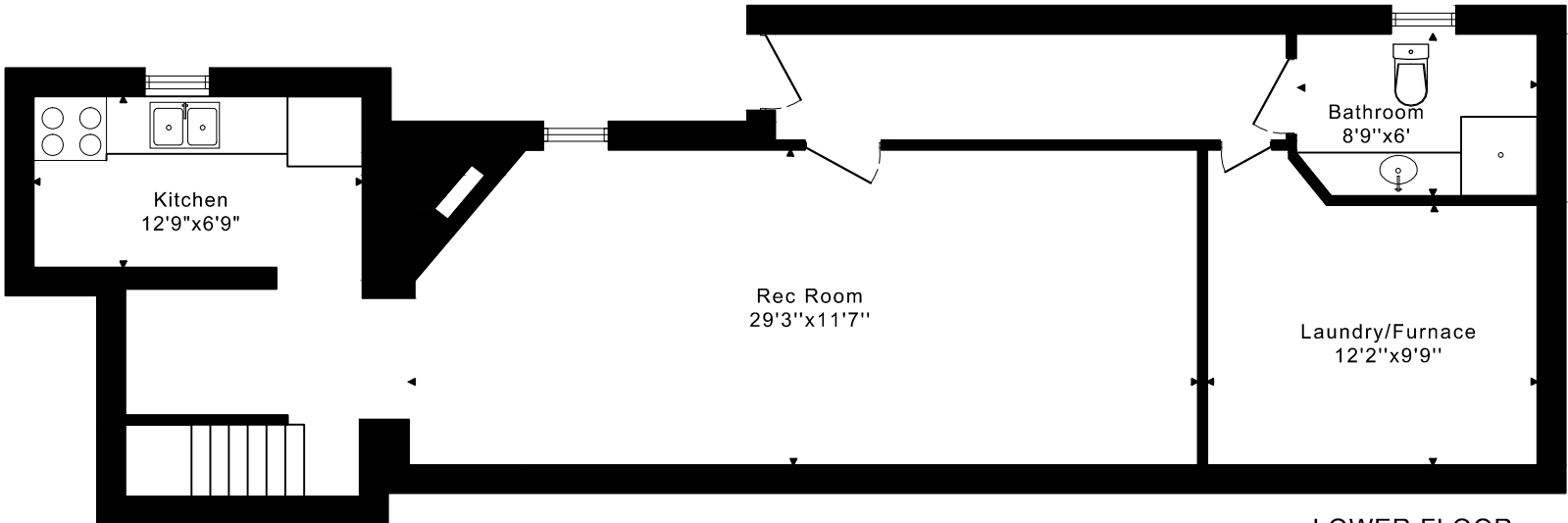
THIRD FLOOR  
460 SQUARE FEET



SECOND FLOOR  
650 SQUARE FEET



MAIN FLOOR  
1125 SQUARE FEET



LOWER FLOOR  
825 SQUARE FEET

2235 sq ft + 825 sq ft  
BELOW GRADE

CAPTURED ON: 10 APR 2021  
DIMENSIONS ARE APPROXIMATE AND SHOULD BE CONSIDERED  
ILLUSTRATIVE ONLY.