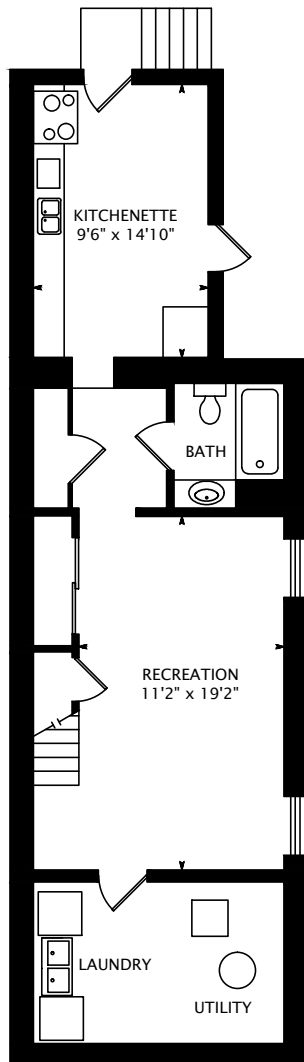
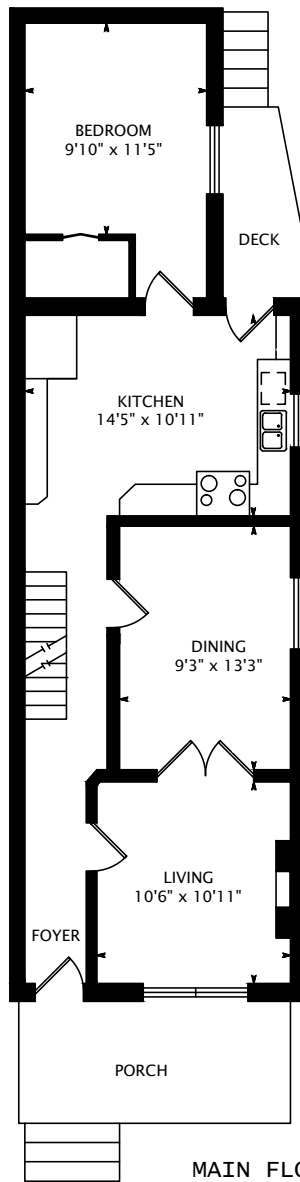


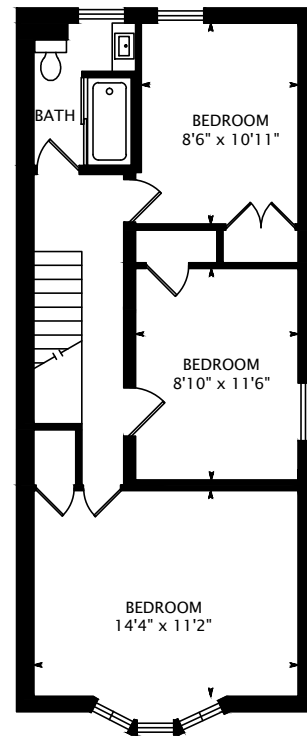
# 338 OSLER STREET



LOWER FLOOR  
749 SQUARE FEET



MAIN FLOOR  
773 SQUARE FEET



SECOND FLOOR  
605 SQUARE FEET

1378 SQUARE FEET  
+ 749 SQUARE FEET BELOW GRADE

interactive tour: [tours.propertyspaces.ca/338-osler-street](https://tours.propertyspaces.ca/338-osler-street)



DATE: SEPTEMBER 11, 2016

DIMENSIONS, AREAS, LAYOUTS AND DETAILS ARE APPROXIMATE  
AND SHOULD BE CONSIDERED ILLUSTRATIVE ONLY.