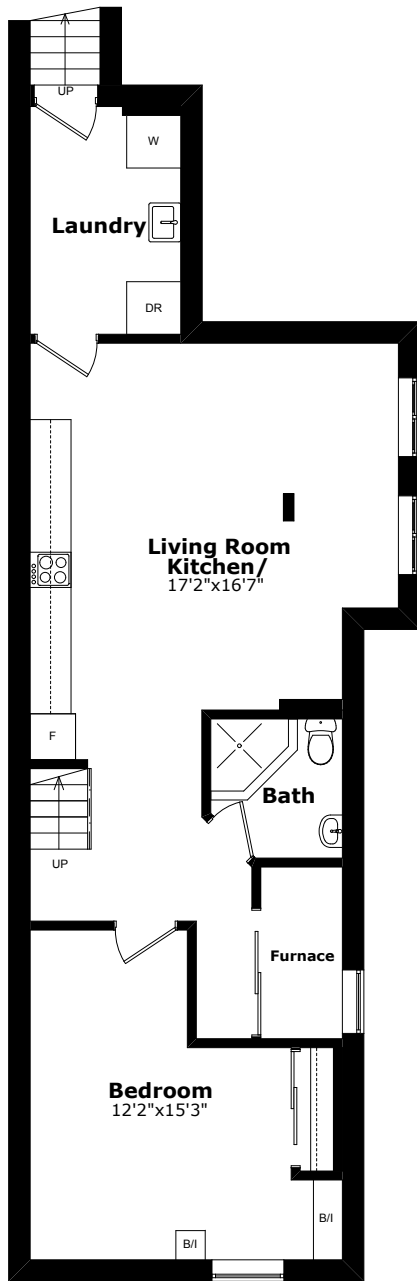
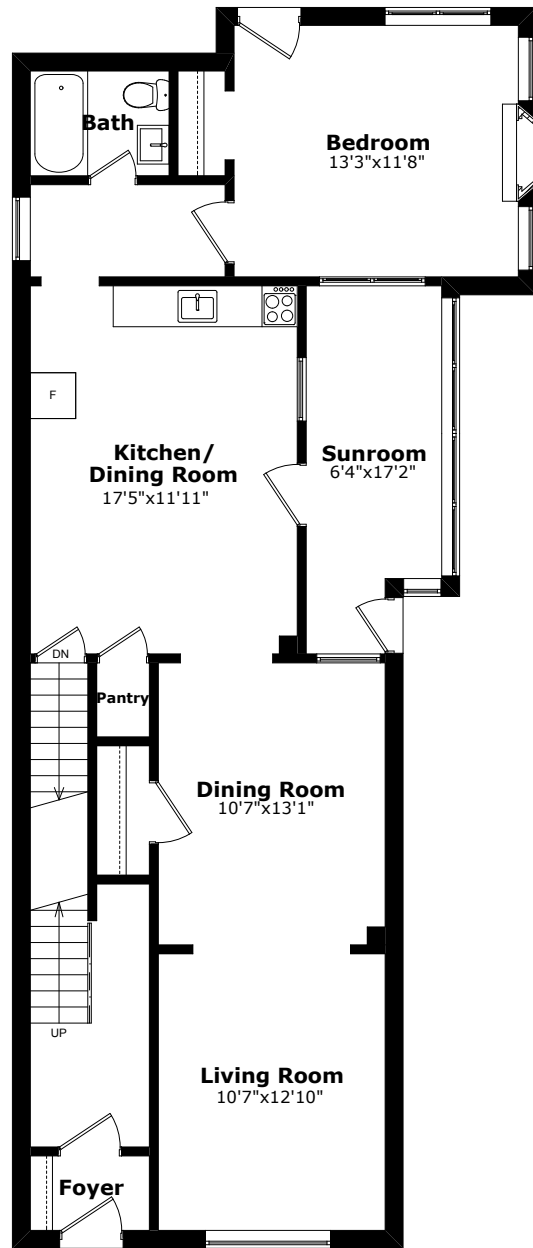


741 PALMERSTON AVENUE



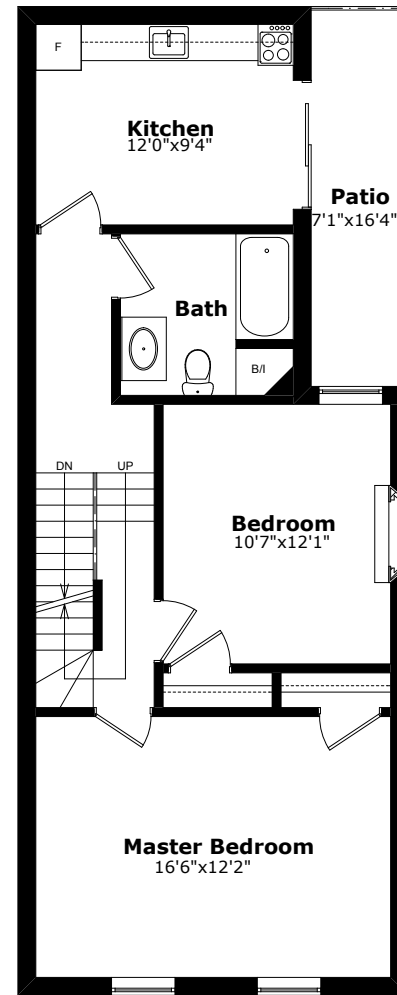
LOWER FLOOR

Approx. Floor Area: 950.7 sq.ft.



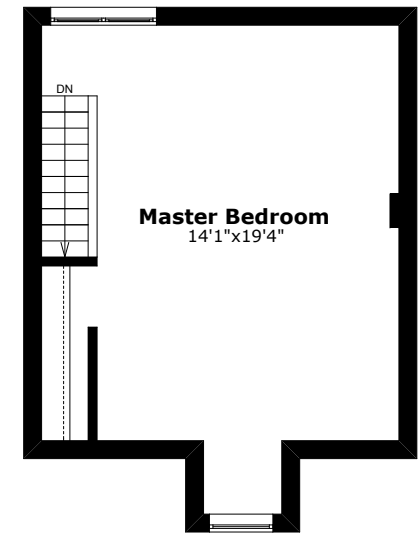
MAIN FLOOR

Approx. Floor Area: 1,150.0 sq.ft.



SECOND FLOOR

Approx. Floor Area: 756.8 sq.ft.



THIRD FLOOR

Approx. Floor Area: 402.6 sq.ft.

NOTE:
THIS FLOOR PLAN IS PROVIDED FOR
ILLUSTRATIVE PURPOSES ONLY
BUYER TO VERIFY MEASUREMENTS
WWW.HOMEMAXTOUR.CA