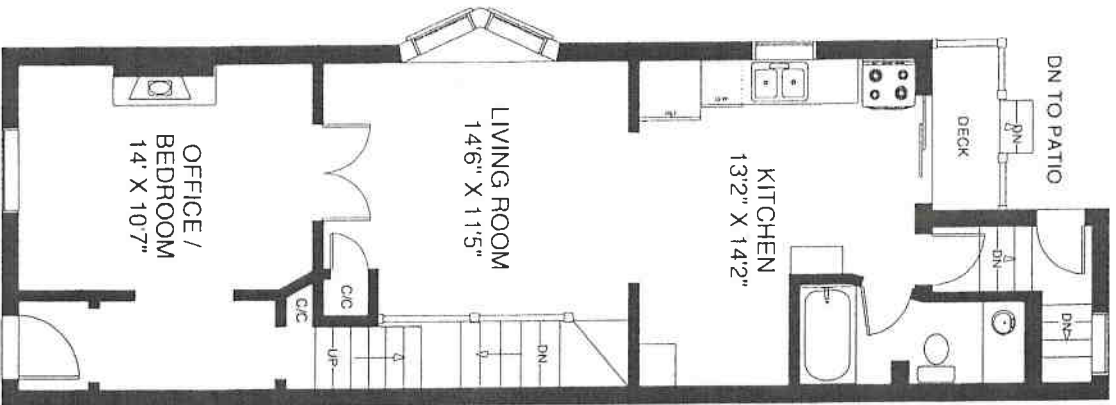
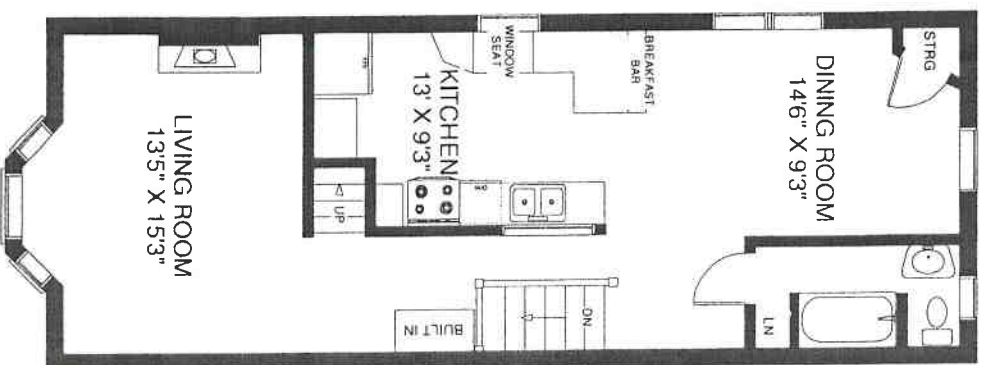


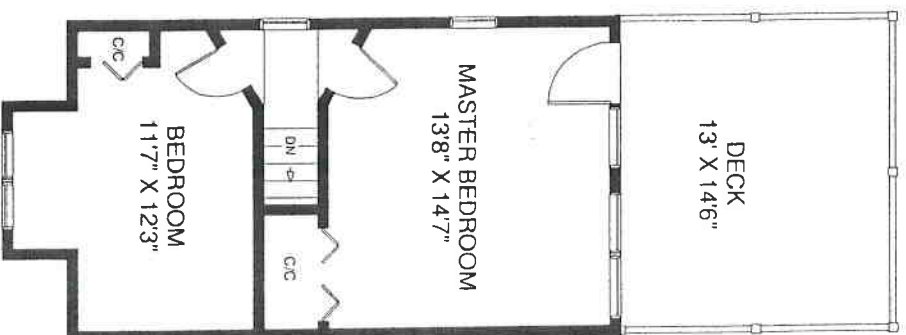
65 LONDON STREET



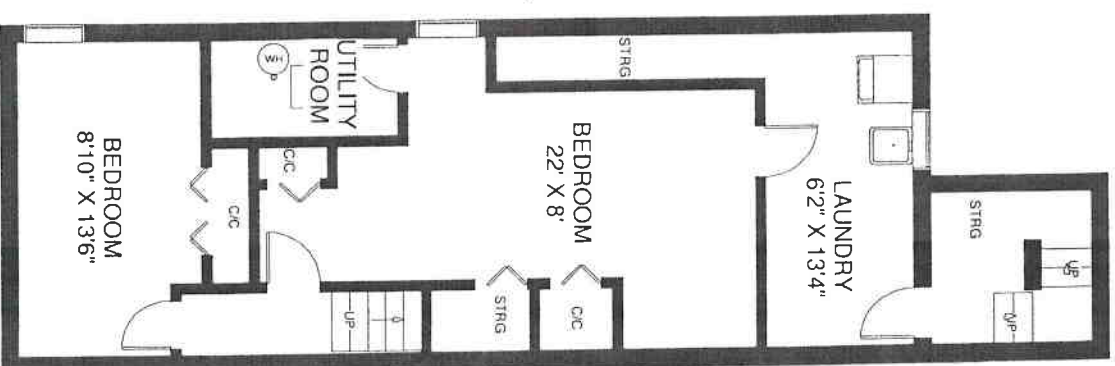
MAIN FLOOR
APPROXIMATELY 840 SQ. FT



SECOND FLOOR
APPROXIMATELY 700 SQ. FT



THIRD FLOOR
APPROXIMATELY 440 SQ. FT



LOWER FLOOR
APPROXIMATELY 840 SQ. FT

Note: Measurements & Calculations are approximate.
Provided as a guideline only.